

# DATA SHEET



## Three Phase Induction Motor - Squirrel Cage

Customer :										
Product line		: W21 Explosion Proof NEMA Premium Efficiency Three-Phase		Product code : 14390091						
				Catalog # : 04018XT3E324T						
Frame	: 324T			Locked rotor time	: 34s (cold) 19s (hot)					
Output	: 40 HP (30 kW)			Temperature rise	: 80 K					
Poles	: 4			Duty cycle	: Cont.(S1)					
Frequency	: 60 Hz			Ambient temperature	: -20°C to +40°C					
Rated voltage	: 230/460 V			Altitude	: 1000 m.a.s.l.					
Rated current	: 96.4/48.2 A			Protection degree	: IP55					
L. R. Amperes	: 742/371 A			Cooling method	: IC411 - TEFC					
LRC	: 7.7x(Code J)			Mounting	: F-1					
No load current	: 46.0/23.0 A			Rotation <sup>1</sup>	: Both (CW and CCW)					
Rated speed	: 1780 rpm			Noise level <sup>2</sup>	: 71.0 dB(A)					
Slip	: 1.11 %			Starting method	: Direct On Line					
Rated torque	: 118 ft.lb			Approx. weight <sup>3</sup>	: 648 lb					
Locked rotor torque	: 270 %									
Breakdown torque	: 300 %									
Insulation class	: F									
Service factor	: 1.15									
Moment of inertia (J)	: 8.17 sq.ft.lb									
Design	: B									
Output	25%	50%	75%	100%	Foundation loads					
Efficiency (%)	92.8	93.4	93.0	93.0	94.1	93.0	94.1	92.4	Max. traction	: 1096 lb
	92.9	92.7	93.0	92.4	93.0	93.6	93.0	93.0		
Power Factor	0.39	0.45	0.66	0.72	0.77	0.81	0.83	0.84	Max. compression	: 1746 lb
	0.42	0.39	0.68	0.66	0.79	0.77	0.83	0.83		
Bearing type	:	<u>Drive end</u>			<u>Non drive end</u>					
Sealing	:	6312 C3			6212 C3					
Lubrication interval	:	Oil Seal			Lip Seal					
Lubricant amount	:	20000 h			20000 h					
Lubricant type	:	21 g			13 g					
		Mobil Polyrex EM								
Notes										
This revision replaces and cancel the previous one, which must be eliminated.					These are average values based on tests with sinusoidal power supply, subject to the tolerances stipulated in NEMA MG-1.					
(1) Looking the motor from the shaft end.										
(2) Measured at 1m and with tolerance of +3dB(A).										
(3) Approximate weight subject to changes after manufacturing process.										
(4) At 100% of full load.										
Rev.	Changes Summary				Performed	Checked	Date			
Performed by										
Checked by							Page	Revision		
Date	12/08/2024						1 / 2			

# DATA SHEET

## Three Phase Induction Motor - Squirrel Cage

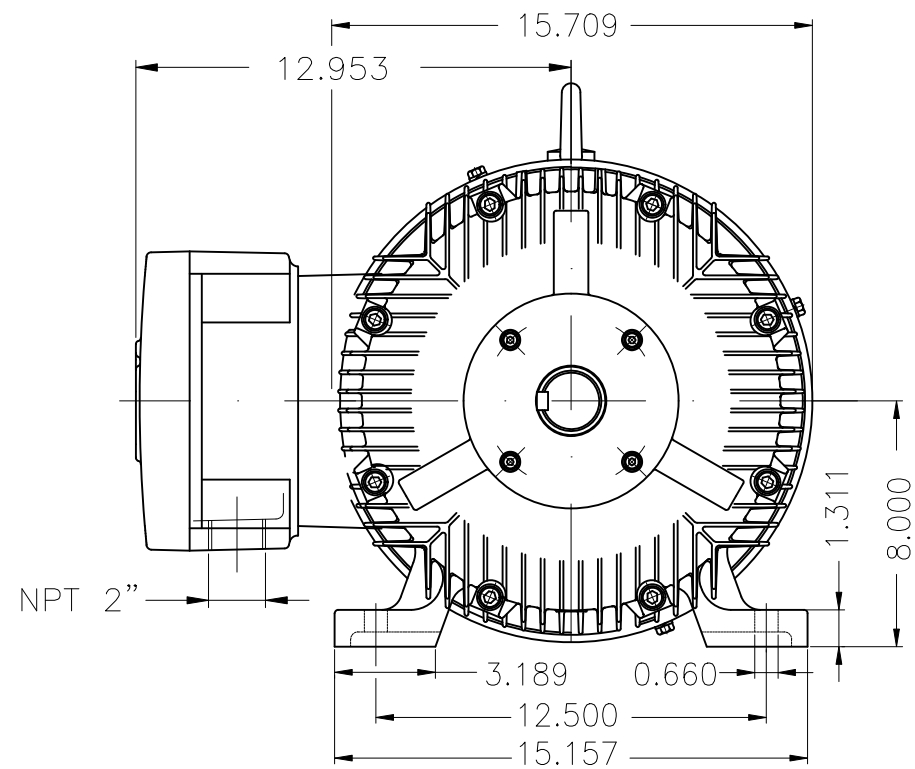


Customer : \_\_\_\_\_

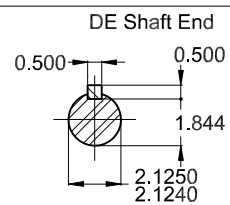
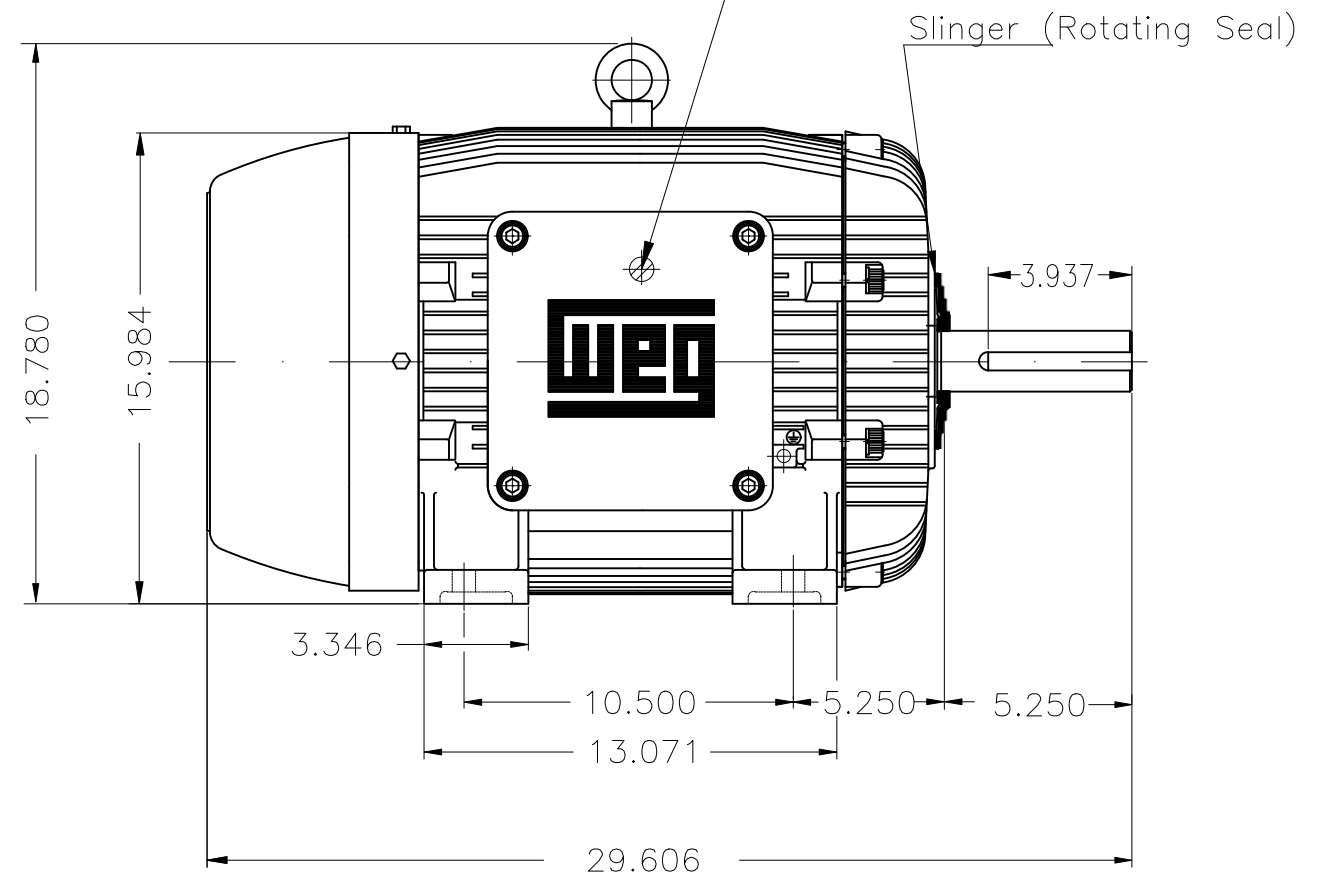
### Thermal protection

ID	Application	Type	Quantity	Sensing Temperature
1	Winding	Thermostat - 2 wires	1 x Phase	155 °C

Rev.	Changes Summary	Performed	Checked	Date
Performed by				
Checked by			Page	Revision
Date	12/08/2024		2 / 2	



Grounding for leads 5.2-35 mm<sup>2</sup> / 10-2 AWG



Color RAL 5009  
 Painting plan 202P  
 Mounting NEMA F-1  
 Mounting B3R(D)

40 HP 04 Poles 60 Hz

ECM		LOC	SUMMARY OF MODIFICATIONS		HYBRISUSER					00
EXECUTED	HYBRISUSER		THREE PH. MOTOR EXPLOSION PROOF	NEMA PREM. EFF.	EXECUTED	CHECKED	RELEASED	DATE	VER	
CHECKED			FRAME 324T IP55 TEFC							
RELEASED										
REL. DATE		WMO	Jaragua do Sul	Product Engineering						

PREVIEW  
 WDD 00

