

# GOL PUMPS



G.P.T.CO

[www.golpumps.com](http://www.golpumps.com)



## GPD/GPL -Manual

---

## **FOREWORD**

We appreciate for your selection of our pump for use. Before you using it, we suggest you to read this booklet carefully, if you had any question, please refer to our distributor, they might give you satisfactory instructions. And, before or in use, if maintain the original state of situation, contact our distributor or the dealer, or you may ask the technicians who are specialized in electric machineries.

The correct use will ensure the pump always in good condition and enlong the servicing life.

### **WARNING:**

**Before install this pump make sure to read and follow this instruction carefully.**

1. The pump must be installed by a qualified electrician.
2. The pump must be connected to an approved electrical box as per the local electrical code.
3. The electrical box must have a motor-control switch.
4. The pump is not provided with motor protection. During the installation the pump must be protected for overload and over current as per the local code.
5. If the pump is intended for sewage purpose, then the tank is to be vented in accordance with local plumbing codes.
6. **WARNING:** The pump is not to be installed in locations classified as hazardous in accordance with the National Electrical Code, ANSI /NFPA 70.

## **OPERATION INSTRUCTION**

### **(A)Note before using**

1. Properly located the pump during the shipment, also avoid the pump being cracked.
2. Please install a Ground Fault Circuit Interrupt in circuit to ensure the safety operation. Due to long-term use, the cable may have detection of the surface; the Ground Fault Circuit Interrupt is of an important device.

3. Confirm the supply voltage comply with specified in the name plate.
4. Check the pump is in normal running when the power starts on.
5. Confirm the motor is rotating in correct direction
  - (a) Single phase : the single phase motor has a fixed rotating direction in spite of cable connection,
  - (b) 3 phase motor: if the motor runs reversely, it only needs to change any two wires connection among the 3 wires.

Note: If the motor turns reversely, abnormal sound and vibration can be found and the liquid volume is obviously reduced. Also the motor's service life will be shortened.

#### **(B) Note in using**

1. For the first installation, please fill the pump with the liquid to prevent the mechanical seal damage from the dry running protection ◦
2. Lay down a strainer at the suction inlet of pipe to avoid incoming rubbish and foreign matter, and also recommend you to use a foot valve at the suction inlet of pipe to get even better performance ◦
3. Place a check valve at discharge pipe line and air bypass pipe under the check valve in order to avoid breakage by water hammer.
4. In case of high temperature liquid over 40°C, place flexible joints and bending in pipe line to avoid piping load to pump by pipe's expansion Avoid deformation of pump by over-tightening when using a flexible joint, a loose flange made of metal or an inner packing on the piping line.
5. Place each flange surface of pipe and pump in parallel and do not over-tighten by bolts.
6. Use resin pipe, avoid metal pipe as much as possible ◦
7. No matter what kind of pump, it always accompanies with a normal sound while the pump works. Any of abnormal sound, vibration, amperage, or less water output, is the signal of latter breakdown. Stop the pump at once by switch off the power. Refer to the next page for trouble-shooting.

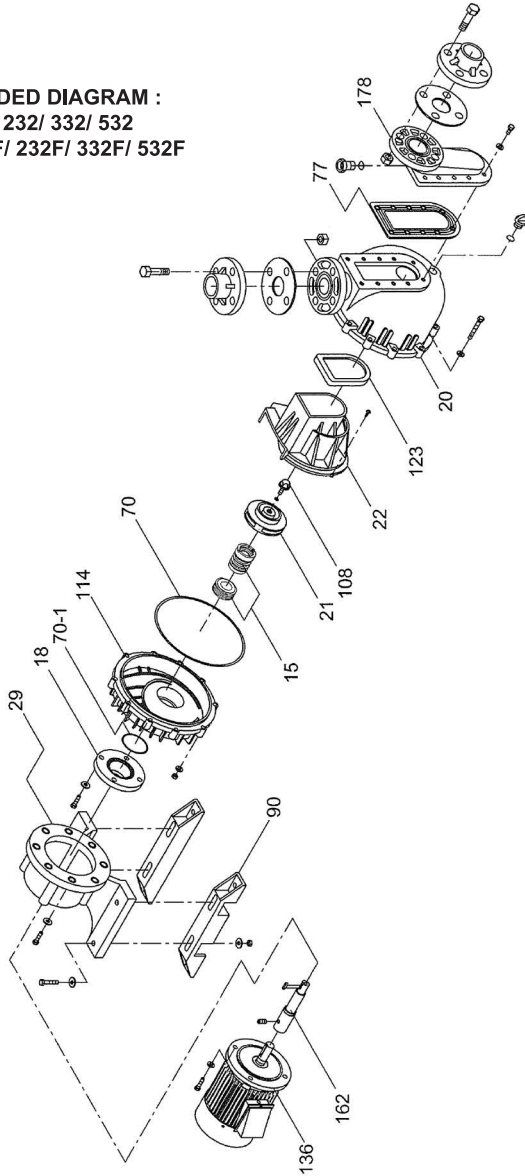
#### **(C) Notes after using**

- (1) Do not leave the pump in water when the pump to be not for use for a certain period of time, so as to prevent inside/outside being rusted caused by water.
- (2) Was the pump in clean water by running it for a few minutes; clean up material in strainer or on impeller. Store the pump in dry place after totally dried.

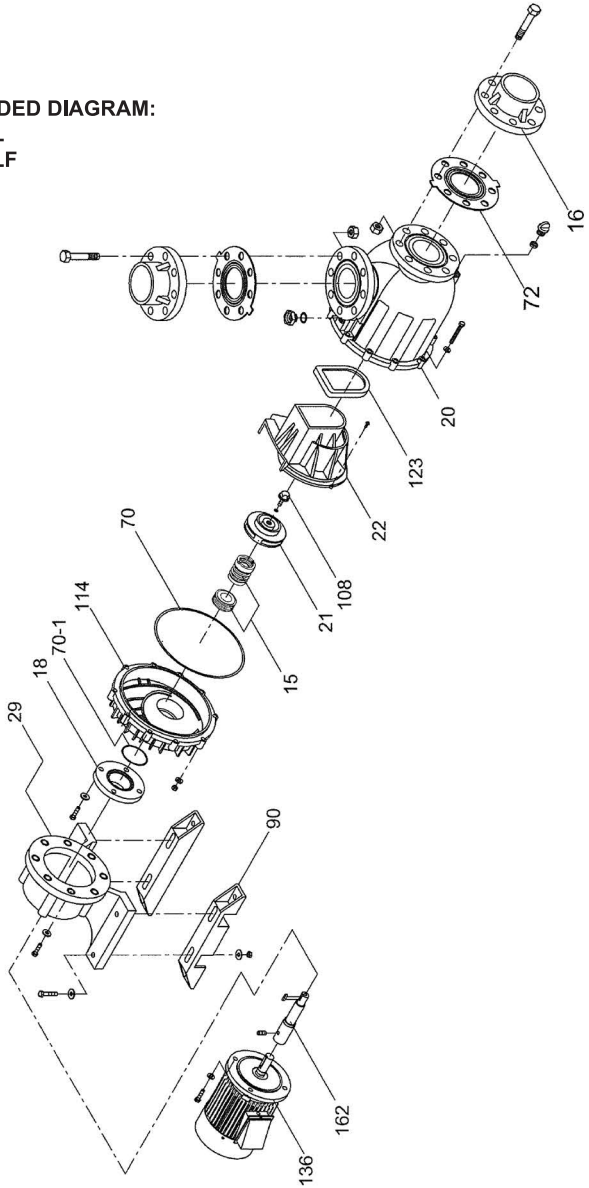
#### **(D) Warranty**

- (1) All of our distributors will reserve sufficient spare parts for servicing the customers. This will provide the users quick, better replacement and maintenance.
- (2) When you use the pump, if you find it works out of order, please contact your dealer as soon as possible.
- (3) Any failure caused by human-error, in-correct power source or natural disaster; this is out of our liability of warranty.

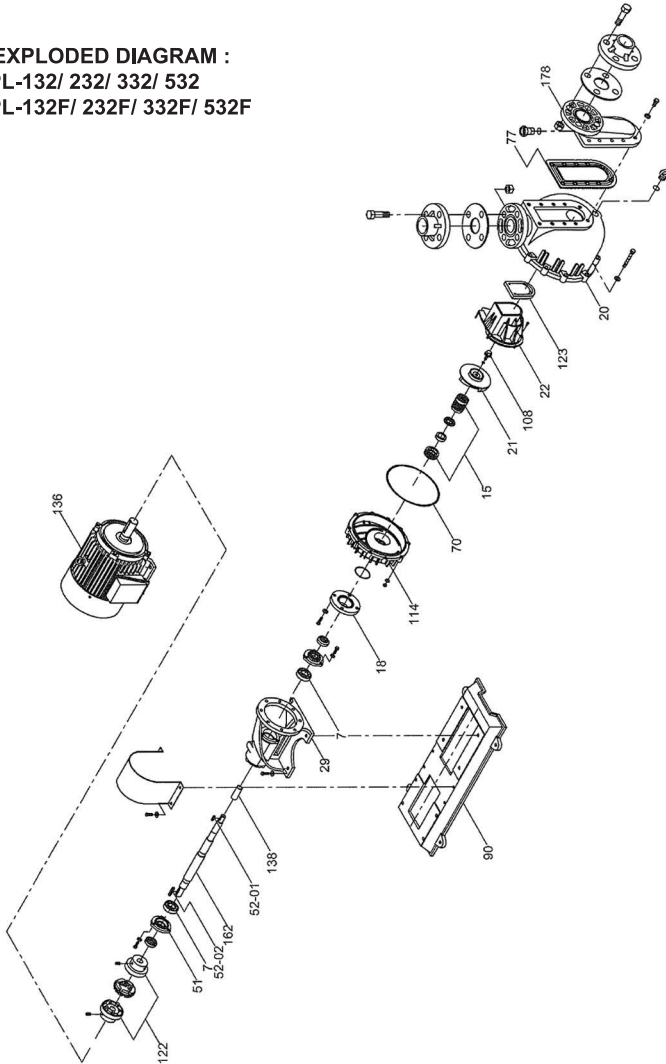
■ EXPLODED DIAGRAM :  
GPD-132/ 232/ 332/ 532  
GPD-132F/ 232F/ 332F/ 532F



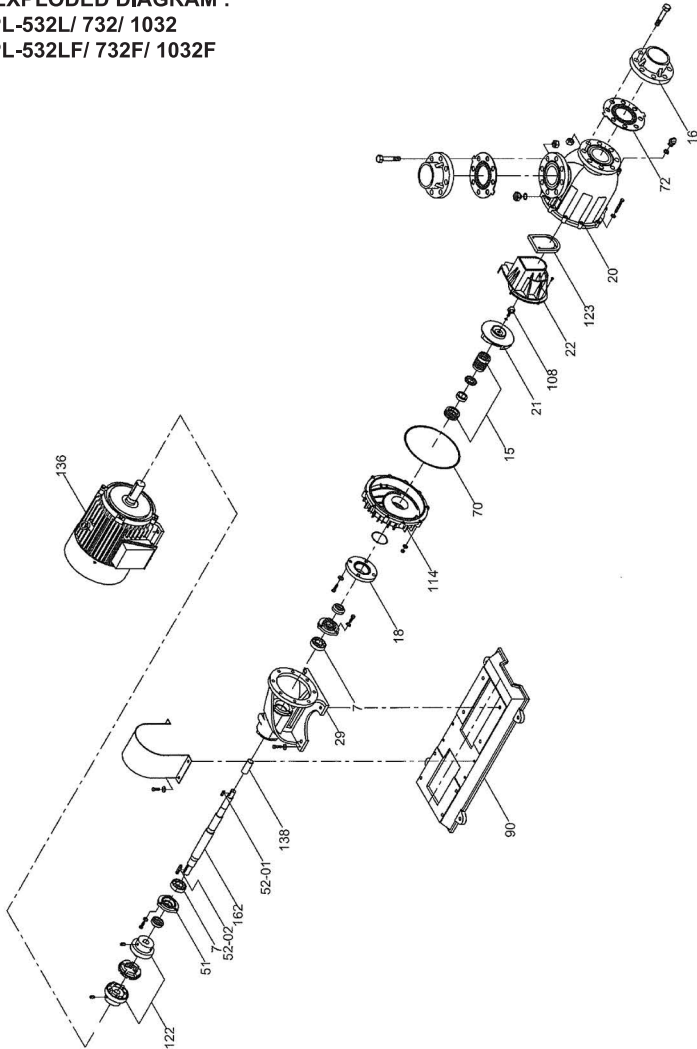
■ EXPLODED DIAGRAM:  
GPD-532L  
GPD-532LF



■ EXPLODED DIAGRAM :  
GPL-132/ 232/ 332/ 532  
GPL-132F/ 232F/ 332F/ 532F



■ EXPLODED DIAGRAM :  
GPL-532L/ 732/ 1032  
GPL-532LF/ 732F/ 1032F



# GOL PUMP CHEMICAL FRPP/PVDF PUMP INSTRUCTION MANUAL

## ■ PART LIST

No	NAME OF PARTS
7	Bearing
15	Mechanical Seal (Teflon Bellow Seal)
16	Flange Setter
18	Seal Cover
20	Pump Casing
21	Impeller
22	Suction Cover
29	Pump Bracket
51	Bearing Cover
52	Key
70	O-Ring
72	Outlet Rubber
77	Packing (Gaskets)
90	Frame
108	Nut
122	Coupling
123	Flap Valve
136	Motor
138	Sleeve
162	Shaft for pump
114	Pump Lower Cover
178	Self-Priming Cover



[www.golpumps.com](http://www.golpumps.com)  
[info@golpumps.com](mailto:info@golpumps.com)