

DATA SHEET

Three Phase Induction Motor - Squirrel Cage

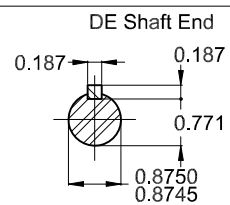
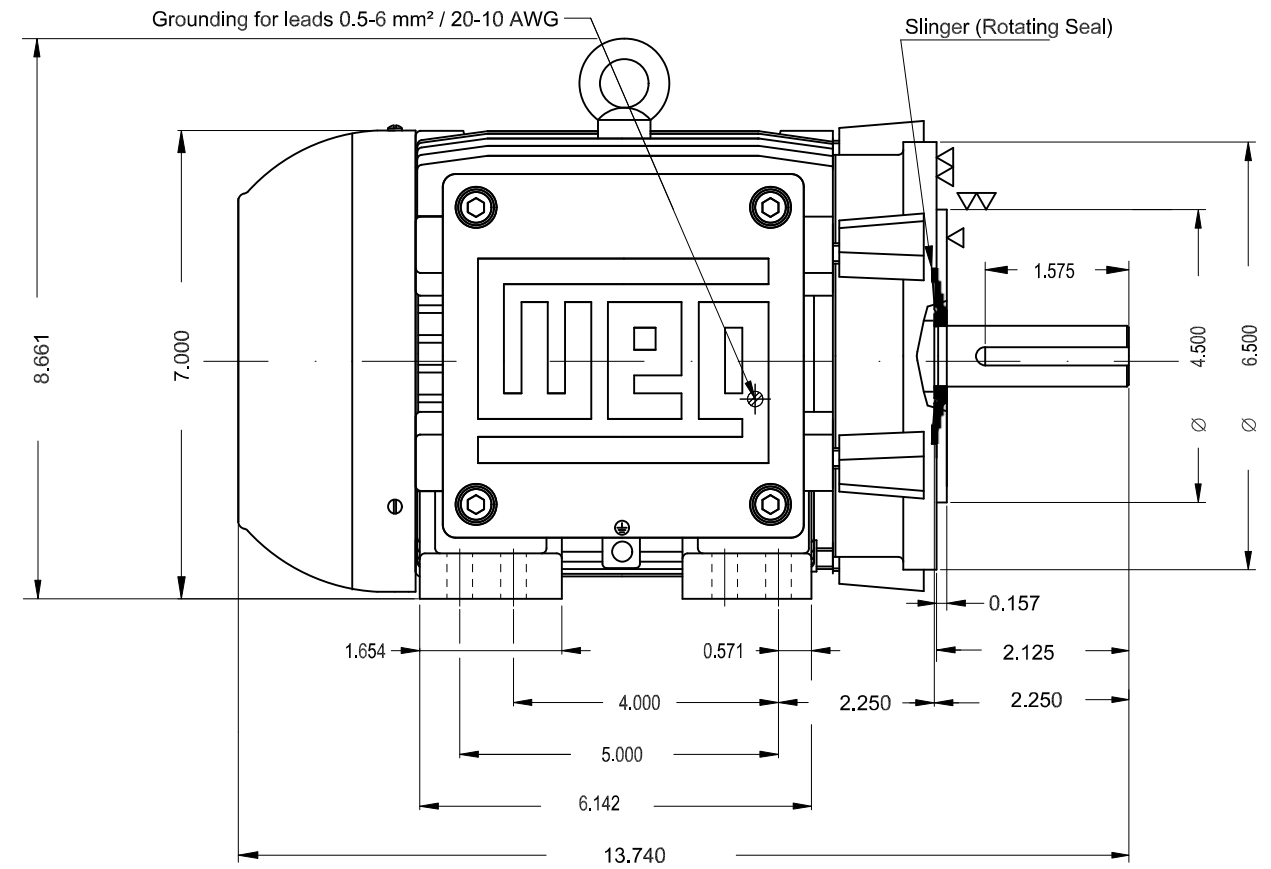
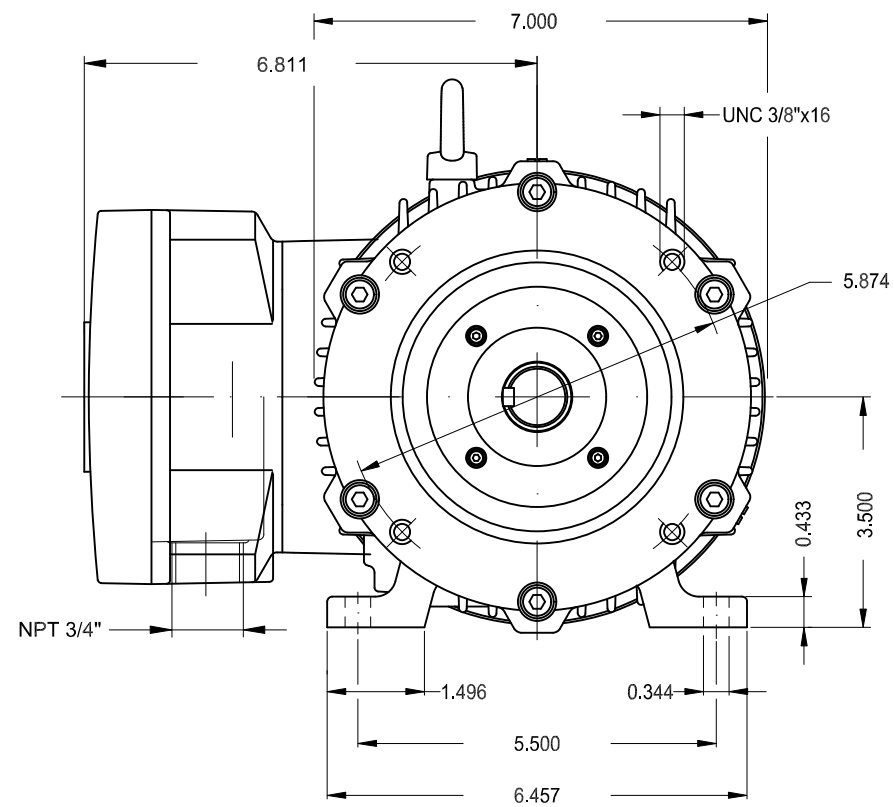


Customer : _____

Thermal protection

ID	Application	Type	Quantity	Sensing Temperature
1	Winding	Thermostat - 2 wires	1 x Phase	155 °C

Rev.	Changes Summary	Performed	Checked	Date
Performed by				
Checked by			Page	Revision
Date	11/03/2025		2 / 2	



Color RAL 5009
 Painting plan 202P
 Mounting NEMA F-1
 Mounting B34D

1.5 HP 04 Poles 60 Hz

A

						HYBRISUSER								00	
ECM	LOC	SUMMARY OF MODIFICATIONS				EXECUTED	CHECKED	RELEASED	DATE	VER					
EXECUTED	HYBRISUSER	THREE PH. MOTOR EXPLOSION PROOF		NEMA PREM. EFF.		PREVIEW									
CHECKED		FRAME 143/5TC IP55 TEFC				WDD		00							
RELEASED						SHEET		1 / 1							
REL. DATE		WMO	Jaragua do Sul		Product Engineering										





W21X

MODEL 00158XT3E145TC

Inverter Duty Motor
Severe Duty
Explosion Proof Motor



Class I, Div 1, Gr C and D - T3C
Class II, Div 1, Gr E and F - T3C
Class II, Div 1, Gr F and G - T3C



Class I, Div 1, Gr C and D - T3C

60Hz: For use on PWM: VT1000:1, CT20:1, 1.00SF, T3C, AMB 40°C
CC029A

PH3 60Hz Fr. 143/5TC 1000m.a.s.l. IP55 TEFC 73lb

V 230/460

A 4.10/2.05

HP 1.5

kW 1.1

SF 1.15

SFA 4.71/2.36

RPM 1755

PF 0.78

AMB 40°C

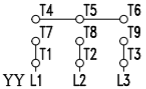
INS cl. F DT80K NEMA NOM EFF 86.5%

DUTY CONT.

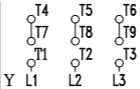
DES B Code L

AMB 55°C SF1.0

1.5HP 1.1kW 50Hz 380V 2.40A 1440RPM SF 1.00 EFF 84.0% (IE2)



230V



380//460V



6205-2RS

6204-2RS



MOBIL POLYREX EM

MADE IN BRAZIL
14284388