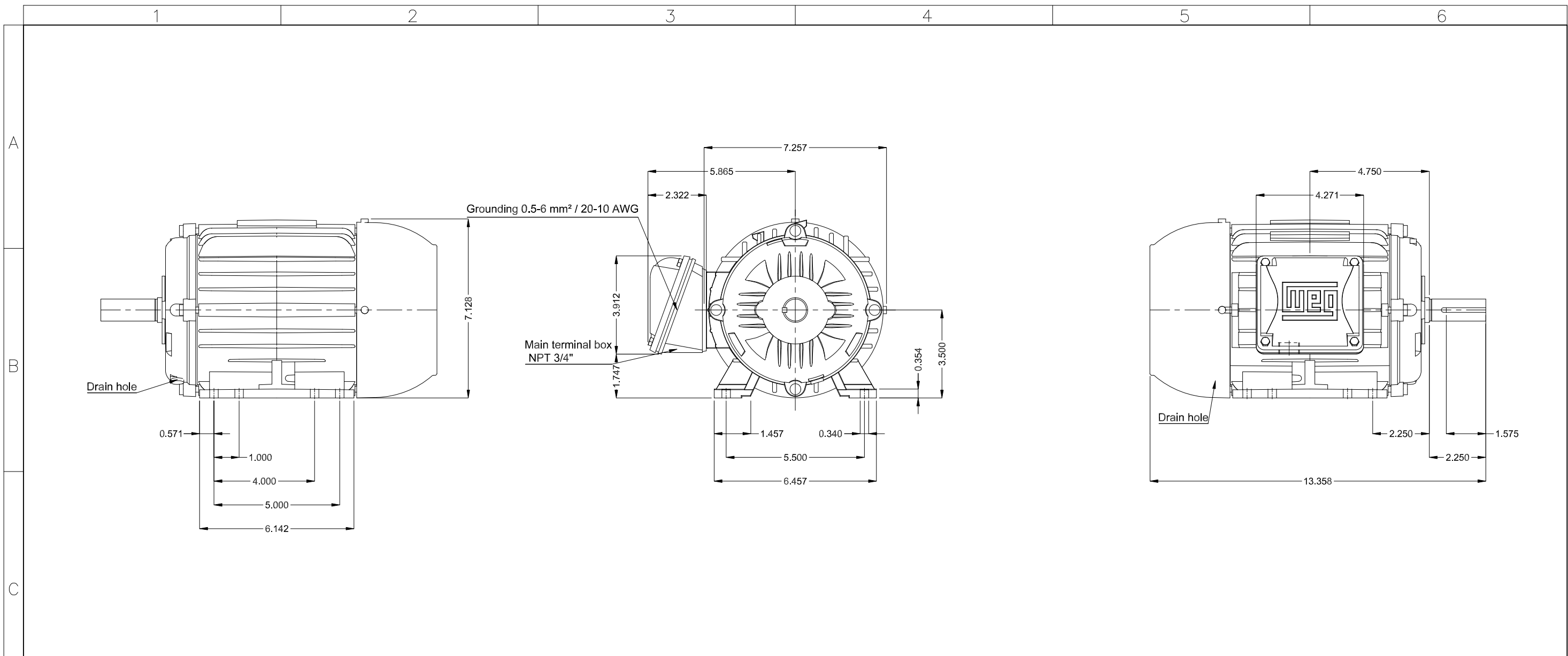


DATA SHEET



Three Phase Induction Motor - Squirrel Cage

Customer :						
Product line	: W22 NEMA Premium Efficiency Three-Phase	Product code :	11416577			
		Catalog # :	00218ET3E145T-W22			
Frame	: 143/5T	Locked rotor time	: 18s (cold) 10s (hot)			
Output	: 2 HP (1.5 kW)	Temperature rise	: 80 K			
Poles	: 4	Duty cycle	: Cont.(S1)			
Frequency	: 60 Hz	Ambient temperature	: -20°C to +40°C			
Rated voltage	: 230/460 V	Altitude	: 1000 m.a.s.l.			
Rated current	: 5.58/2.79 A	Protection degree	: IP55			
L. R. Amperes	: 46.3/23.2 A	Cooling method	: IC411 - TEFC			
LRC	: 8.3x(Code L)	Mounting	: F-1			
No load current	: 3.26/1.63 A	Rotation ¹	: Both (CW and CCW)			
Rated speed	: 1750 rpm	Noise level ²	: 51.0 dB(A)			
Slip	: 2.78 %	Starting method	: Direct On Line			
Rated torque	: 6.00 ft.lb	Approx. weight ³	: 50.0 lb			
Locked rotor torque	: 270 %					
Breakdown torque	: 320 %					
Insulation class	: F					
Service factor	: 1.25					
Moment of inertia (J)	: 0.1561 sq.ft.lb					
Design	: B					
Output	50%	75%	100%			
Efficiency (%)	85.5	86.5	86.5			
Power Factor	0.57	0.70	0.78			
Foundation loads		Max. traction	: 158 lb			
		Max. compression	: 208 lb			
Losses at normative operating points (speed;torque), in percentage of rated output power						
P1 (0,9;1,0)	P2 (0,5;1,0)	P3 (0,25;1,0)	P4 (0,9;0,5)	P5 (0,5;0,5)	P6 (0,5;0,25)	P7 (0,25;0,25)
15.0	12.8	12.1	8.4	6.0	4.7	3.5
		<u>Drive end</u>	<u>Non drive end</u>			
Bearing type	:	6205 ZZ	6204 ZZ			
Sealing	:	V'Ring	V'Ring			
Lubrication interval	:	-	-			
Lubricant amount	:	-	-			
Lubricant type	:	Mobil Polyrex EM				
Notes						
USABLE @208V 5.85A SF 1.15 SFA 6.73A						
This revision replaces and cancel the previous one, which must be eliminated. (1) Looking the motor from the shaft end. (2) Measured at 1m and with tolerance of +3dB(A). (3) Approximate weight subject to changes after manufacturing process. (4) At 100% of full load.			These are average values based on tests with sinusoidal power supply, subject to the tolerances stipulated in NEMA MG-1.			
Rev.	Changes Summary		Performed	Checked	Date	
Performed by						
Checked by					Page	Revision
Date	12/03/2025				1 / 1	

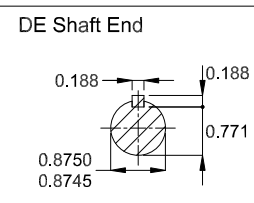


C

D

E

Color RAL 5009
 Painting plan 207A
 Mounting NEMA F-1
 Mounting B3R(D)




2 HP 04 Poles 60 Hz A

Scale 1 : 4

ECM		LOC	SUMMARY OF MODIFICATIONS		HYBRISUSER				00
EXECUTED	HYBRISUSER			THREE PH. MOTOR W22 NEMA PREM. EFF.	PREVIEW WDD 00 SHEET 1 / 1				
CHECKED				FRAME 143/5T IP55 TEFC					
RELEASED									
REL. DATE									



 Class I, Div 2, Gr A, B, C, D, 1.15SF - T3
 Class II, Div 2, Gr F, G - T5
 60Hz: For use on PWM: Gr. A, B, C, D, F, G, VT 1000:1, CT 20:1, 1.00SF - T4A

C US Energy Verified

MADE IN MEXICO
11416577

Inverter Duty Motor
Severe Duty

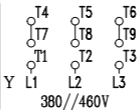
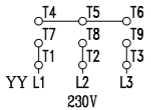
 FOR SAFE AREA
Mod. TE1BFOXON
CC029A

LISTED 3PT9


PH3 60Hz Fr. 143/5T 1000m.a.s.l. IP55 TEFC 50lb

V 230/460 A 5.58/2.79
 HP 2.0 kW 1.5
 SF 1.25 SFA 6.97/3.49
 RPM 1750 PF 0.78
 AMB 40°C INS cl. F DT80K NEMA NOM EFF 86.5%
 DUTY CONT. DES B Code L

2.0HP 1.5kW 50Hz 380V 3.33A 1435RPM SF 1.25 SFA 4.16 EFF 82.5% (IE1)



6205-ZZ
6204-ZZ

 MOBIL POLYREX EM