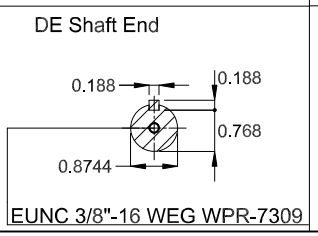
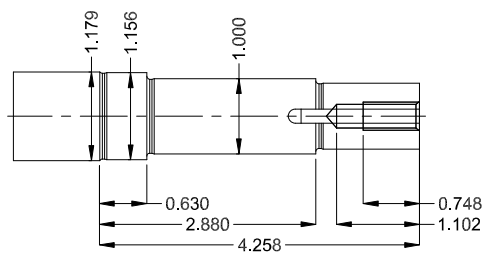
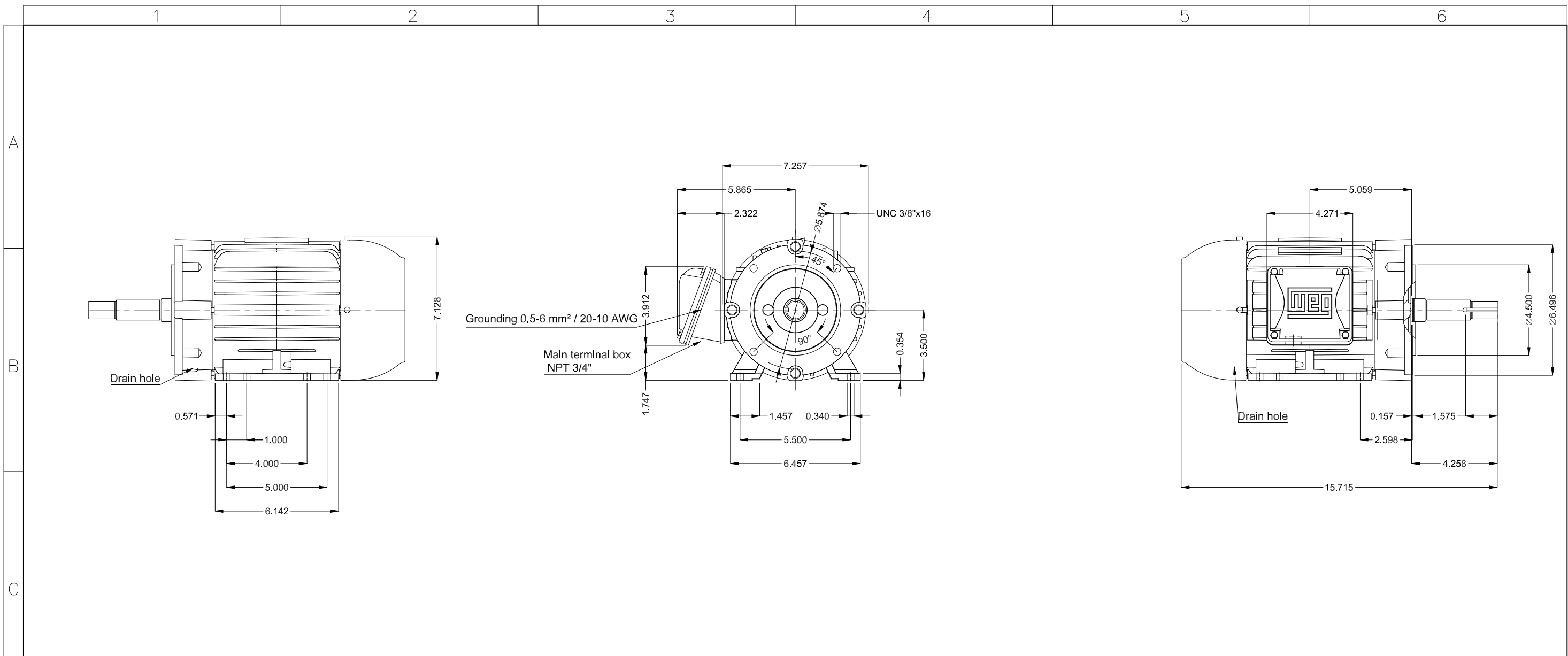


# DATA SHEET

## Three Phase Induction Motor - Squirrel Cage



|  |                 |  |   |  |                           |                    |
|--|-----------------|--|---|--|---------------------------|--------------------|
| Customer :   |                 |  |   |  |                           |                    |
| Product line   |                 | : W22 Close Coupled Pump JM<br>NEMA Premium Efficiency Three-Phase |   | Product code :   |                           | 13469729           |
|  |                 |  |   | Catalog # :  |                           | 00336ET3E145JM-W22 |
| Frame : 143/5JM<br>Output : 3 HP (2.2 kW)<br>Poles : 2<br>Frequency : 60 Hz<br>Rated voltage : 230/460 V<br>Rated current : 7.42/3.71 A<br>L. R. Amperes : 60.1/30.1 A<br>LRC : 8.1x(Code J)<br>No load current : 2.60/1.30 A<br>Rated speed : 3460 rpm<br>Slip : 3.89 %<br>Rated torque : 4.55 ft.lb<br>Locked rotor torque : 330 %<br>Breakdown torque : 360 %<br>Insulation class : F<br>Service factor : 1.25<br>Moment of inertia (J) : 0.0605 sq.ft.lb<br>Design : B |                 |  | Locked rotor time : 25s (cold) 14s (hot)<br>Temperature rise : 80 K<br>Duty cycle : Cont.(S1)<br>Ambient temperature : -20°C to +40°C<br>Altitude : 1000 m.a.s.l.<br>Protection degree : IP55<br>Cooling method : IC411 - TEFC<br>Mounting : F-1<br>Rotation <sup>1</sup> : Both (CW and CCW)<br>Noise level <sup>2</sup> : 68.0 dB(A)<br>Starting method : Direct On Line<br>Approx. weight <sup>3</sup> : 58.6 lb |  |                           |                    |
| Output   |                 | 50%  | 75%   | 100%   | Foundation loads          |                    |
| Efficiency (%)   |                 | 85.5   | 86.5  | 86.5   | Max. traction : 129 lb    |                    |
| Power Factor   |                 | 0.70   | 0.81  | 0.86   | Max. compression : 188 lb |                    |
| Losses at normative operating points (speed;torque), in percentage of rated output power   |                 |  |   |  |                           |                    |
| P1 (0,9;1,0)   | P2 (0,5;1,0)    | P3 (0,25;1,0)  | P4 (0,9;0,5)  | P5 (0,5;0,5)   | P6 (0,5;0,25)             | P7 (0,25;0,25)     |
| 14.8   | 12.3            | 11.7   | 6.8   | 4.3  | 2.6                       | 1.7                |
|  |                 |  | <u>Drive end</u>  | <u>Non drive end</u>   |                           |                    |
| Bearing type   |                 | : 6206 ZZ  |   | : 6204 ZZ  |                           |                    |
| Sealing  |                 | : V'Ring   |   | : V'Ring   |                           |                    |
| Lubrication interval   |                 | : -  |   | : -  |                           |                    |
| Lubricant amount   |                 | : -  |   | : -  |                           |                    |
| Lubricant type   |                 | : Mobil Polyrex EM   |   |  |                           |                    |
| Notes  |                 |  |   |  |                           |                    |
| This revision replaces and cancel the previous one, which must be eliminated.<br>(1) Looking the motor from the shaft end.<br>(2) Measured at 1m and with tolerance of +3dB(A).<br>(3) Approximate weight subject to changes after manufacturing process.<br>(4) At 100% of full load.   |                 |  |   | These are average values based on tests with sinusoidal power supply, subject to the tolerances stipulated in NEMA MG-1. |                           |                    |
| Rev.   | Changes Summary |  |   | Performed  | Checked                   | Date               |
| Performed by   |                 |  |   |  |                           |                    |
| Checked by   |                 |  |   |  | Page                      | Revision           |
| Date   | 12/03/2025      |  |   |  | 1 / 1                     |                    |



Color RAL 5009  
 Painting plan 207A  
 Mounting NEMA F-1  
 Mounting B34D

|                     |            |  |  |  |  |             |          |         |          |      |     |
|---------------------|------------|--|--|--|--|-------------|----------|---------|----------|------|-----|
| 3 HP 02 Poles 60 Hz |            |  |  |  |  |             |          |         |          | A    |     |
| Scale 1 : 5         |            |  |  |  |  |             |          |         |          |      |     |
| HYBRISUSER          |            |  |  |  |  |             |          |         |          | 00   |     |
| ECM                 | LOC        | SUMMARY OF MODIFICATIONS                           |  |  |  |             | EXECUTED | CHECKED | RELEASED | DATE | VER |
| EXECUTED            | HYBRISUSER | THREE PH. MOTOR JM/JP/JET PUMP W22 NEMA PREM. EFF. |  |  |  |             | EXECUTED | CHECKED | RELEASED | DATE | VER |
| CHECKED             |            | FRAME 143/5JM IP55 TEFC                            |  |  |  |             | EXECUTED | CHECKED | RELEASED | DATE | VER |
| RELEASED            |            |  |  |  |  |             | EXECUTED | CHECKED | RELEASED | DATE | VER |
| REL. DATE           |            |  |  |  |  |             | EXECUTED | CHECKED | RELEASED | DATE | VER |
|                     |            |  |  |  |  | PREVIEW     |          | WDD 00  |          |      |     |
|                     |            |  |  |  |  | SHEET 1 / 1 |          |         |          |      |     |



W22

MODEL 00336ET3E145JM-W22

Inverter Duty Motor  
Severe Duty



Class I, Div 2, Gr A, B, C, D, 1.15SF - T3  
Class II, Zone 2, IIC, 1.15SF - T3  
60Hz: For use on PWM: Gr. A, B, C, D, F,  
G, VT 1000:1, CT 20:1, 1.00SF - T4A



FOR SAFE AREA  
Mod.TE1BFOXON  
CC029A

MADE IN BRAZIL  
13469729

PH3 60Hz Fr. 143/5JM 1000m.a.s.l. IP55 TEFC 59lb

V 230/460

A 7.42/3.71

HP 3.0

kW 2.2

SF 1.25

SFA 9.28/4.64

RPM 3460

PF 0.86

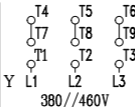
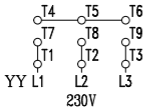
AMB 40°C

INS cl. F DT80K NEMA NOM EFF 86.5%

DUTY CONT.

DES B Code J

3.0HP 2.2kW 50Hz 380V 4.44A 2820RPM SF 1.25 SFA 5.55 EFF 84.6% (IE2)



MOBIL POLYREX EM