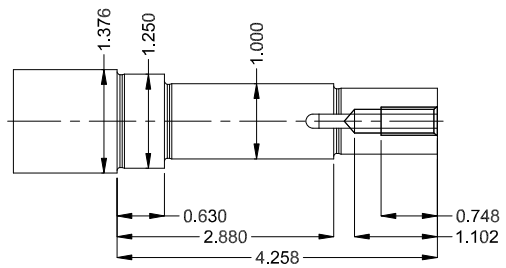
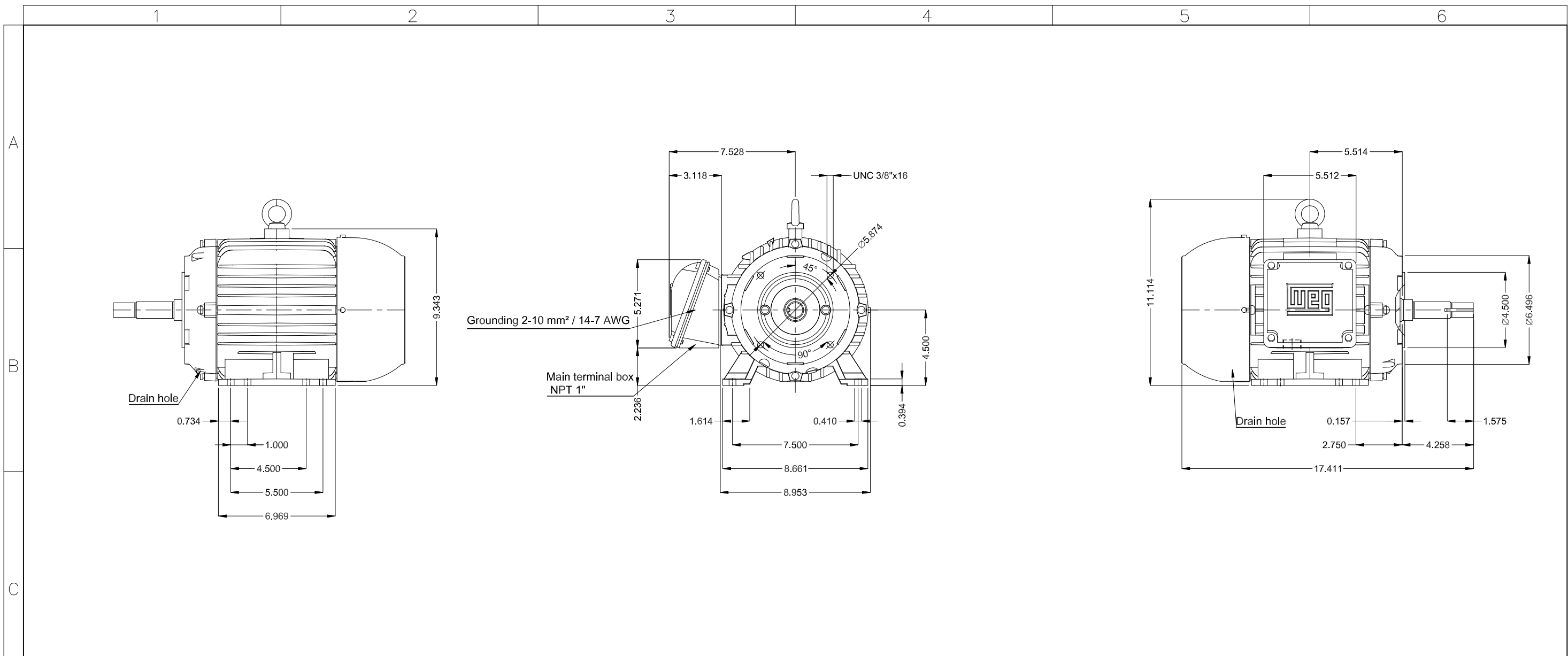


DATA SHEET

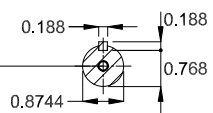


Three Phase Induction Motor - Squirrel Cage

Customer :							
Product line	: W22 Close Coupled Pump JM NEMA Premium Efficiency Three-Phase	Product code :	12598689				
		Catalog # :	00336ET3E182JM-W22				
Frame : 182/4JM Output : 3 HP (2.2 kW) Poles : 2 Frequency : 60 Hz Rated voltage : 230/460 V Rated current : 7.52/3.76 A L. R. Amperes : 64.7/32.3 A LRC : 8.6x(Code K) No load current : 3.20/1.60 A Rated speed : 3515 rpm Slip : 2.36 % Rated torque : 4.48 ft.lb Locked rotor torque : 250 % Breakdown torque : 380 % Insulation class : F Service factor : 1.25 Moment of inertia (J) : 0.1889 sq.ft.lb Design : B	Locked rotor time : 46s (cold) 26s (hot) Temperature rise : 80 K Duty cycle : Cont.(S1) Ambient temperature : -20°C to +40°C Altitude : 1000 m.a.s.l. Protection degree : IP55 Cooling method : IC411 - TEFC Mounting : F-1 Rotation ¹ : Both (CW and CCW) Noise level ² : 66.0 dB(A) Starting method : Direct On Line Approx. weight ³ : 77.6 lb						
Output	25%	50%	75%	100%	Foundation loads		
Efficiency (%)	81.1	82.0	86.0	86.5	Max. traction : 75 lb		
Power Factor	0.44	0.70	0.80	0.85	Max. compression : 153 lb		
Losses at normative operating points (speed;torque), in percentage of rated output power							
P1 (0,9;1,0)	P2 (0,5;1,0)	P3 (0,25;1,0)	P4 (0,9;0,5)	P5 (0,5;0,5)	P6 (0,5;0,25)	P7 (0,25;0,25)	
14.6	10.7	9.4	8.3	4.5	3.1	1.8	
			Drive end				Non drive end
Bearing type	:	6307 ZZ				6206 ZZ	
Sealing	:	V'Ring				V'Ring	
Lubrication interval	:	-				-	
Lubricant amount	:	-				-	
Lubricant type	:	Mobil Polyrex EM					
Notes							
USABLE @208V 8.01A SF 1.15 SFA 9.21A							
This revision replaces and cancel the previous one, which must be eliminated. (1) Looking the motor from the shaft end. (2) Measured at 1m and with tolerance of +3dB(A). (3) Approximate weight subject to changes after manufacturing process. (4) At 100% of full load.				These are average values based on tests with sinusoidal power supply, subject to the tolerances stipulated in NEMA MG-1.			
Rev.	Changes Summary			Performed	Checked	Date	
Performed by							
Checked by					Page	Revision	
Date	11/03/2025				1 / 1		



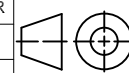
DE Shaft End



EUNC 3/8"-16 WEG WPR-7309

Color RAL 5009
 Painting plan 207A
 Mounting NEMA F-1
 Mounting B34D

3 HP 02 Poles 60 Hz										A	
Scale 1 : 6											
HYBRISUSER										00	
ECM	LOC	SUMMARY OF MODIFICATIONS					EXECUTED	CHECKED	RELEASED	DATE	VER
EXECUTED	HYBRISUSER	THREE PH. MOTOR JM/JP/JET PUMP W22 NEMA PREM. EFF.					EXECUTED	CHECKED	RELEASED	DATE	VER
CHECKED		FRAME 182/4JM IP55 TEFC					EXECUTED	CHECKED	RELEASED	DATE	VER
RELEASED							EXECUTED	CHECKED	RELEASED	DATE	VER
REL. DATE							EXECUTED	CHECKED	RELEASED	DATE	VER
						PREVIEW		WDD 00		SHEET 1 / 1	





W22

MODEL 00336ET3E182JM-W22

Inverter Duty Motor
Severe Duty



Class I, Div 2, Gr A, B, C, D, 1.15SF - T3
Class II, Div 2, IIC, 1.15SF - T3
Class I, Div 2, Gr F, G - T5
60Hz: For use on PWM: Gr. A, B, C, D, F,
G, VT 1000:1, CT 20:1, 1.00SF - T4A



FOR SAFE AREA
Mod. TE1BFOXON
CC029A

MADE IN MEXICO
12598689

PH3 60Hz Fr. 182/4JM 1000m.a.s.l. IP55 TEFC 80lb

V 230/460

A 7.52/3.76

HP 3.0

kW 2.2

SF 1.25

SFA 9.40/4.70

RPM 3515

PF 0.85

AMB 40°C

INS cl. F DT80K NEMA NOM EFF 86.5%

DUTY CONT.

DES B Code K

3.0HP 2.2kW 50Hz 380V 4.44A 2890RPM SF 1.25 SFA 5.55 EFF 85.5% (IE2)

