

DATA SHEET



Three Phase Induction Motor - Squirrel Cage

Customer :					
Product line		: W21 Explosion Proof NEMA Premium Efficiency Three-Phase		Product code : 14406980	
				Catalog # : 00712XT3E254T	
Frame	: 254T	Cooling method	: IC411 - TEFC		
Insulation class	: F	Mounting	: F-1		
Duty cycle	: Cont.(S1)	Rotation ¹	: Both (CW and CCW)		
Ambient temperature	: -20°C to +40°C	Starting method	: Direct On Line		
Altitude	: 1000 m.a.s.l.	Approx. weight ²	: 325 lb		
Protection degree	: IP55	Moment of inertia (J)	: 3.32 sq.ft.lb		
Design	: B				
Output [HP]	7.5			7.5	
Poles	6			6	
Frequency [Hz]	60			50	
Rated voltage [V]	230/460			380	
Rated current [A]	19.5/9.73			11.5	
L. R. Amperes [A]	136/68.1			64.4	
LRC [A]	7.0x(Code J)			5.6x(Code G)	
No load current [A]	10.4/5.20			5.20	
Rated speed [RPM]	1175			960	
Slip [%]	2.08			4.00	
Rated torque [ft.lb]	33.5			41.0	
Locked rotor torque [%]	270			175	
Breakdown torque [%]	320			229	
Service factor	1.15			1.00	
Temperature rise	80 K			80 K	
Locked rotor time	45s (cold) 25s (hot)			18s (cold) 10s (hot)	
Noise level ²	59.0 dB(A)			57.0 dB(A)	
Efficiency (%)	25%				
	50%	88.5		89.5	
	75%	90.2		89.5	
	100%	91.0		88.5	
Power Factor	25%				
	50%	0.58		0.65	
	75%	0.71		0.77	
	100%	0.78		0.82	
Bearing type	: Drive end : 6309 C3	Non drive end : 6209 C3	Foundation loads		
Sealing	: Oil Seal	Lip Seal	Max. traction	: 386 lb	
Lubrication interval	: 20000 h	20000 h	Max. compression	: 710 lb	
Lubricant amount	: 13 g	9 g			
Lubricant type	: Mobil Polyrex EM				
Notes USABLE @208V 21.5A SF 1.15 SFA 24.7A					
This revision replaces and cancel the previous one, which must be eliminated. (1) Looking the motor from the shaft end. (2) Measured at 1m and with tolerance of +3dB(A). (3) Approximate weight subject to changes after manufacturing process. (4) At 100% of full load.			These are average values based on tests with sinusoidal power supply, subject to the tolerances stipulated in NEMA MG-1.		
Rev.	Changes Summary		Performed	Checked	Date
Performed by					
Checked by				Page	Revision
Date	27/03/2025			1 / 2	

DATA SHEET

Three Phase Induction Motor - Squirrel Cage

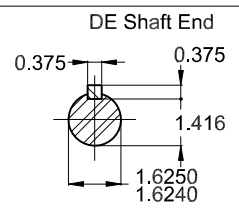
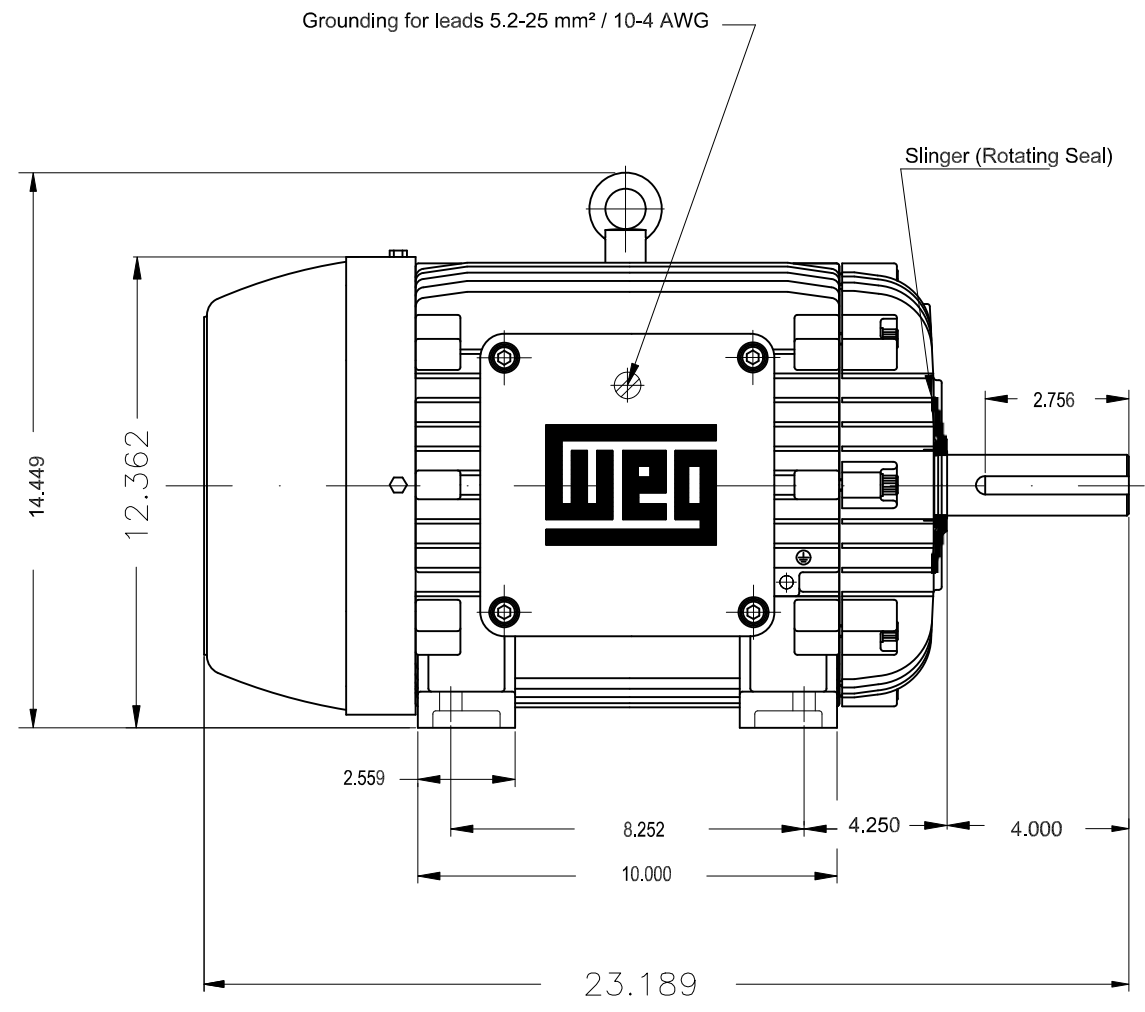
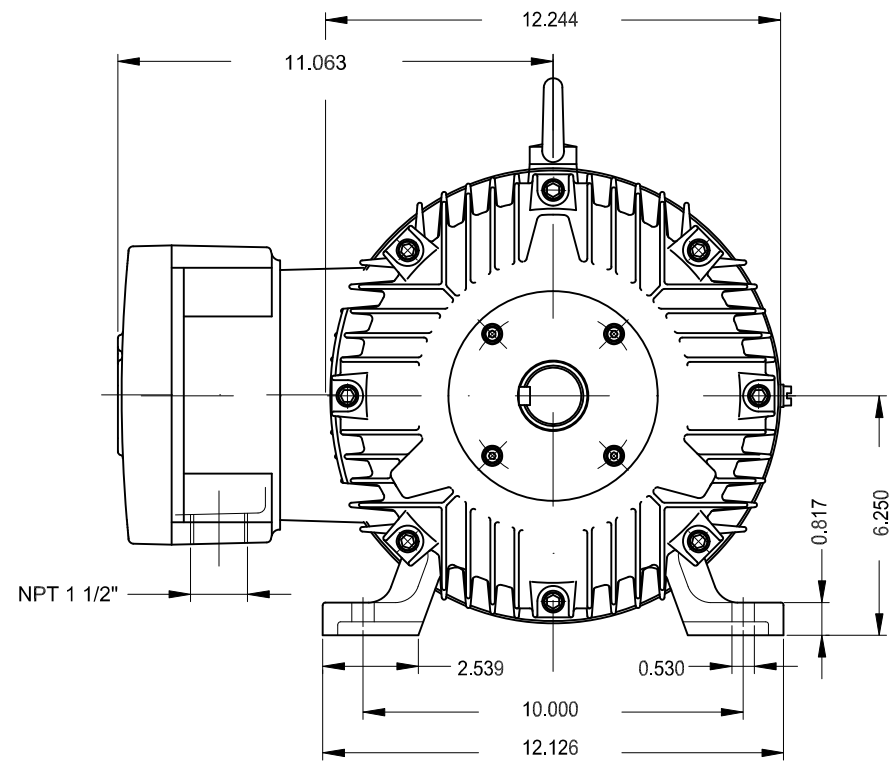


Customer : _____

Thermal protection

ID	Application	Type	Quantity	Sensing Temperature
1	Winding	Thermostat - 2 wires	1 x Phase	155 °C

Rev.	Changes Summary	Performed	Checked	Date
Performed by				
Checked by			Page	Revision
Date	27/03/2025		2 / 2	



With grease fitting
 Color RAL 5009
 Painting plan 222P
 Mounting NEMA F-1
 Mounting B3R(D)

7.5 HP 06 Poles 60 Hz A

						HYBRISUSER								00	
ECM	LOC	SUMMARY OF MODIFICATIONS				EXECUTED	CHECKED	RELEASED	DATE	VER					
EXECUTED	HYBRISUSER	THREE PH. MOTOR EXPLOSION PROOF		NEMA PREM. EFF.		PREVIEW									
CHECKED		FRAME 254T IP55 TEFC				WDD		00							
RELEASED						SHEET		1 / 1							
REL. DATE		WMO	Jaragua do Sul		Product Engineering										

