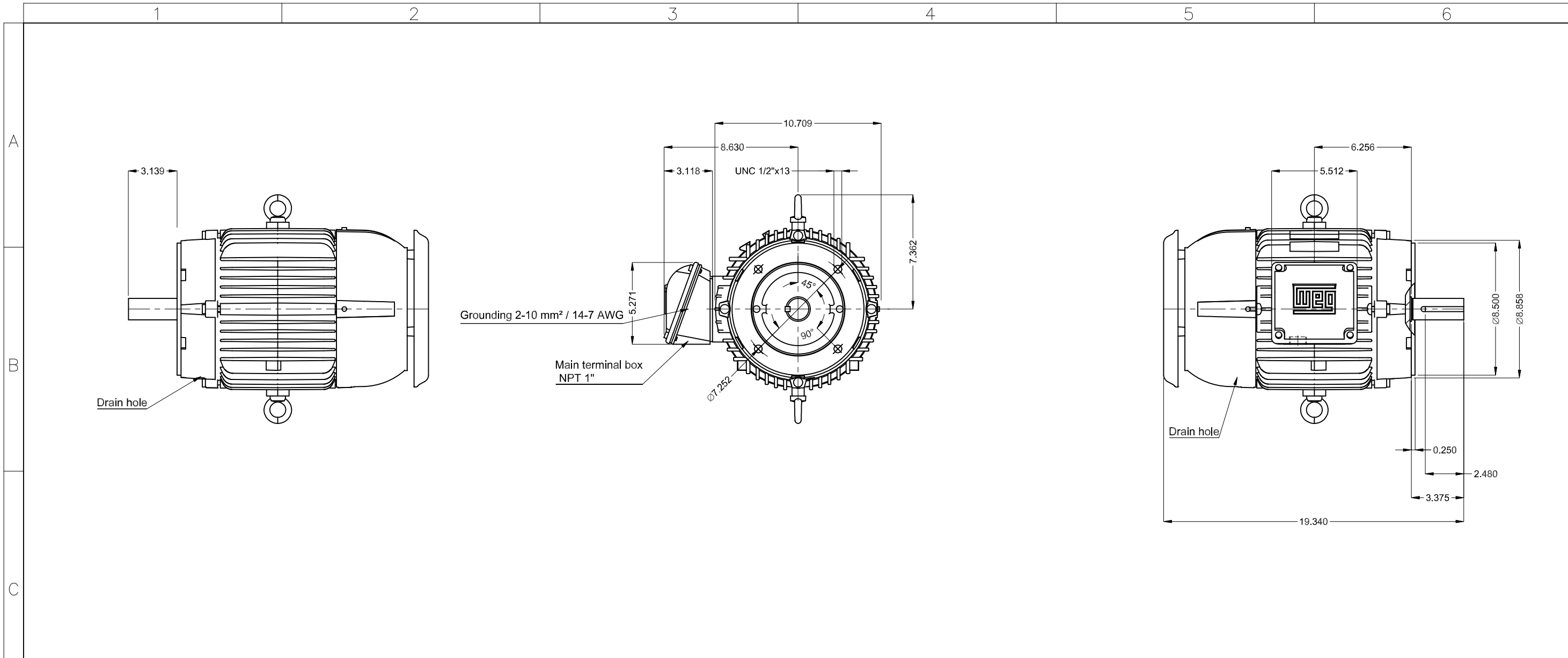


DATA SHEET

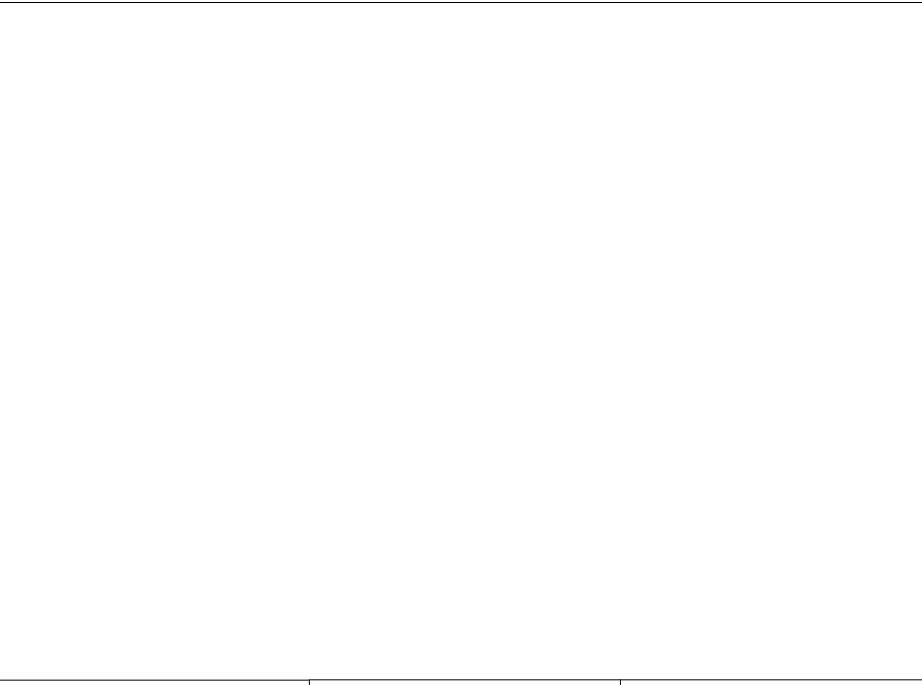


Three Phase Induction Motor - Squirrel Cage

Customer :						
Product line		: W22 NEMA Premium Efficiency Three-Phase		Product code :		12789604
				Catalog # :		00718ET3ER213TC-W22
Frame : 213TC Output : 7.5 HP (5.5 kW) Poles : 4 Frequency : 60 Hz Rated voltage : 230/460 V Rated current : 18.4/9.18 A L. R. Amperes : 130/65.2 A LRC : 7.1x(Code H) No load current : 8.40/4.20 A Rated speed : 1765 rpm Slip : 1.94 % Rated torque : 22.3 ft.lb Locked rotor torque : 220 % Breakdown torque : 310 % Insulation class : F Service factor : 1.25 Moment of inertia (J) : 1.34 sq.ft.lb Design : B			Locked rotor time : 36s (cold) 20s (hot) Temperature rise : 80 K Duty cycle : Cont.(S1) Ambient temperature : -20°C to +40°C Altitude : 1000 m.a.s.l. Protection degree : IP55 Cooling method : IC411 - TEFC Mounting : W-6 Rotation ¹ : Both (CW and CCW) Noise level ² : 58.0 dB(A) Starting method : Direct On Line Approx. weight ³ : 162 lb			
Output			50%	75%	100%	Foundation loads Max. traction : 359 lb Max. compression : 521 lb
Efficiency (%)			89.5	91.0	91.7	
Power Factor			0.66	0.76	0.82	
Losses at normative operating points (speed;torque), in percentage of rated output power						
P1 (0,9;1,0)	P2 (0,5;1,0)	P3 (0,25;1,0)	P4 (0,9;0,5)	P5 (0,5;0,5)	P6 (0,5;0,25)	P7 (0,25;0,25)
8.8	7.0	6.5	4.9	3.3	2.4	1.6
			<u>Drive end</u>		<u>Non drive end</u>	
Bearing type :			6308 ZZ		6207 ZZ	
Sealing :			V'Ring		V'Ring	
Lubrication interval :			-		-	
Lubricant amount :			-		-	
Lubricant type :			Mobil Polyrex EM			
Notes USABLE @208V 19.9A SF 1.15 SFA 22.9A						
This revision replaces and cancel the previous one, which must be eliminated. (1) Looking the motor from the shaft end. (2) Measured at 1m and with tolerance of +3dB(A). (3) Approximate weight subject to changes after manufacturing process. (4) At 100% of full load.				These are average values based on tests with sinusoidal power supply, subject to the tolerances stipulated in NEMA MG-1.		
Rev.	Changes Summary			Performed	Checked	Date
Performed by						
Checked by					Page	Revision
Date	12/03/2025				1 / 1	



Bearing cap
Color RAL 5009
Painting plan 207A
Mounting NEMA W-6
Mounting V18



7.5 HP 04 Poles 60 Hz										A	
Scale										2 : 13	
HYBRISUSER										00	
ECM	LOC	SUMMARY OF MODIFICATIONS					EXECUTED	CHECKED	RELEASED	DATE	VER
EXECUTED	HYBRISUSER	THREE PH. MOTOR W22 NEMA PREM. EFF.					PREVIEW				
CHECKED		FRAME 213TC IP55 TEFC					WDD	00			
RELEASED							SHEET	1 / 1			
REL. DATE											

Dimensions in inches

A3



W22

MODEL 00718ET3ER213TC-W22

Inverter Duty Motor
Severe Duty
IEC 60034-1



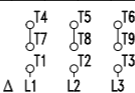
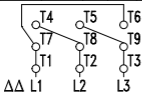
Class I, Div 2, Gr A, B, C, D, 1.15SF - T3
Class II, Div 2, IIC, 1.15SF - T3
Class II, Div 2, Gr F, G - T4
60Hz: For use on PWM: Gr. A, B, C, D, F,
VT 1000:1, CT 20:1, 1.00SF - T3A



FOR SAFE AREA
Mod. TE1BFOXON
CC029A

PH3 Fr. 213TC DUTY CONT. TEFC IP55 DES B(N) Code H
162lb 1000m.a.s.l. INS cl. F DT 80K AMB 40°C SF 1.25//1.25

V		Hz	kW	HP	RPM	A		SFA		PF	IE code	NEMA NOM EFF η 100%/75%/50%
230 $\Delta\Delta$	460 Δ	60	5.5	7.5	1765	18.4	9.18	23.0	11.5	0.82	IE3	91.7/91.0/89.5
380 Δ	-	50	5.5	7.5	1455	11.0	-	13.8	-	0.85	IE3	89.6/89.5/89.5
-	-	-	-	-	-	-	-	-	-	-	-	-
-	-	-	-	-	-	-	-	-	-	-	-	-



MOBIL POLYREX EM

MADE IN MEXICO
12789604