

DATA SHEET



Three Phase Induction Motor - Squirrel Cage

Customer :

Product line : W21 Explosion Proof NEMA Premium Efficiency Three-Phase
 Product code : 14348909
 Catalog # : 01036XT3E215T

Frame	: 213/5T	Locked rotor time	: 52s (cold) 29s (hot)
Output	: 10 HP (7.5 kW)	Temperature rise	: 80 K
Poles	: 2	Duty cycle	: Cont.(S1)
Frequency	: 60 Hz	Ambient temperature	: -20°C to +40°C
Rated voltage	: 230/460 V	Altitude	: 1000 m.a.s.l.
Rated current	: 23.5/11.7 A	Protection degree	: IP55
L. R. Amperes	: 162/80.9 A	Cooling method	: IC411 - TEFC
LRC	: 6.9x(Code H)	Mounting	: F-1
No load current	: 7.20/3.60 A	Rotation ¹	: Both (CW and CCW)
Rated speed	: 3525 rpm	Noise level ²	: 72.0 dB(A)
Slip	: 2.08 %	Starting method	: Direct On Line
Rated torque	: 14.9 ft.lb	Approx. weight ³	: 199 lb
Locked rotor torque	: 210 %		
Breakdown torque	: 280 %		
Insulation class	: F		
Service factor	: 1.15		
Moment of inertia (J)	: 0.5512 sq.ft.lb		
Design	: B		

Output	50%	75%	100%	Foundation loads	
Efficiency (%)	88.5	90.2	90.2	Max. traction	: 164 lb
Power Factor	0.79	0.86	0.89	Max. compression	: 363 lb

Losses at normative operating points (speed;torque), in percentage of rated output power

P1 (0,9;1,0)	P2 (0,5;1,0)	P3 (0,25;1,0)	P4 (0,9;0,5)	P5 (0,5;0,5)	P6 (0,5;0,25)	P7 (0,25;0,25)
10.1	7.5	7.0	5.5	3.0	2.0	1.1

		<u>Drive end</u>	<u>Non drive end</u>
Bearing type	:	6308 2RS	6207 2RS
Sealing	:	Oil Seal	Lip Seal
Lubrication interval	:	-	-
Lubricant amount	:	-	-
Lubricant type	:	Mobil Polyrex EM	

Notes
 USABLE @208V 25.7A SF 1.15 SFA 29.5A

This revision replaces and cancel the previous one, which must be eliminated.
 (1) Looking the motor from the shaft end.
 (2) Measured at 1m and with tolerance of +3dB(A).
 (3) Approximate weight subject to changes after manufacturing process.
 (4) At 100% of full load.

These are average values based on tests with sinusoidal power supply, subject to the tolerances stipulated in NEMA MG-1.

Rev.	Changes Summary	Performed	Checked	Date
Performed by		Page		Revision
Checked by		1 / 2		
Date	11/03/2025			

DATA SHEET

Three Phase Induction Motor - Squirrel Cage

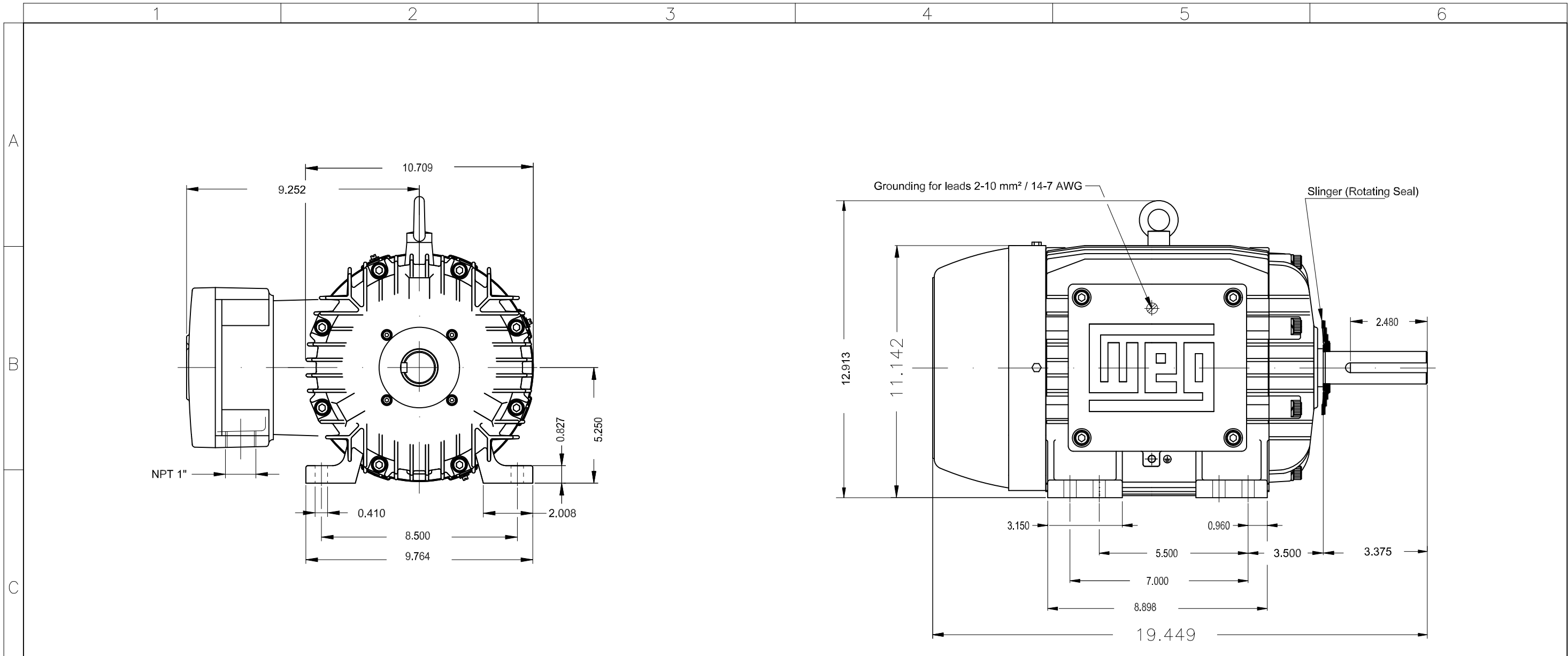


Customer : _____

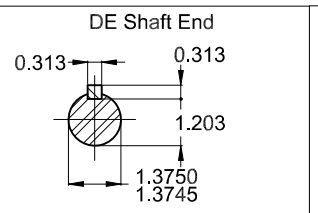
Thermal protection

ID	Application	Type	Quantity	Sensing Temperature
1	Winding	Thermostat - 2 wires	1 x Phase	155 °C

Rev.	Changes Summary	Performed	Checked	Date
Performed by				
Checked by			Page	Revision
Date	11/03/2025		2 / 2	



Color RAL 5009
 Painting plan 202P
 Mounting NEMA F-1
 Mounting B3R(D)



10 HP 02 Poles 60 Hz						A
ECM	LOC	SUMMARY OF MODIFICATIONS		HYBRISUSER		00
EXECUTED	HYBRISUSER	THREE PH. MOTOR EXPLOSION PROOF NEMA PREM. EFF.		EXECUTED	CHECKED	RELEASED
CHECKED		FRAME 213/5T IP55 TEFC		PREVIEW		
RELEASED				WDD 00		
REL. DATE		WMO	Jaragua do Sul	Product Engineering	SHEET	1 / 1

Dimensions in inches XME A3