

DATA SHEET



Three Phase Induction Motor - Squirrel Cage

Customer :

Product line : W40 NEMA Premium Efficiency Three-Phase Product code : 14496989
Catalog # : 04036OT3E286TSC-W40

Frame : 284/6TSC	Locked rotor time : 14s (cold) 8s (hot)
Output : 40 HP (30 kW)	Temperature rise : 80 K
Poles : 2	Duty cycle : Cont.(S1)
Frequency : 60 Hz	Ambient temperature : -20°C to +40°C
Rated voltage : 230/460 V	Altitude : 1000 m.a.s.l.
Rated current : 94.8/47.4 A	Protection degree : IP23
L. R. Amperes : 616/308 A	Cooling method : IC01 - ODP
LRC : 6.5x(Code G)	Mounting : F-1
No load current : 30.0/15.0 A	Rotation ¹ : Both (CW and CCW)
Rated speed : 3540 rpm	Noise level ² : 73.0 dB(A)
Slip : 1.67 %	Starting method : Direct On Line
Rated torque : 59.3 ft.lb	Approx. weight ³ : 337 lb
Locked rotor torque : 200 %	
Breakdown torque : 220 %	
Insulation class : F	
Service factor : 1.25	
Moment of inertia (J) : 2.02 sq.ft.lb	
Design : B	

Output	50%	75%	100%	Foundation loads
Efficiency (%)	91.7	92.4	92.4	Max. traction
Power Factor	0.75	0.83	0.86	Max. compression

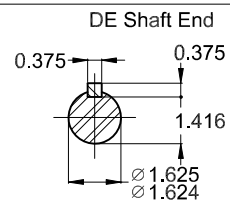
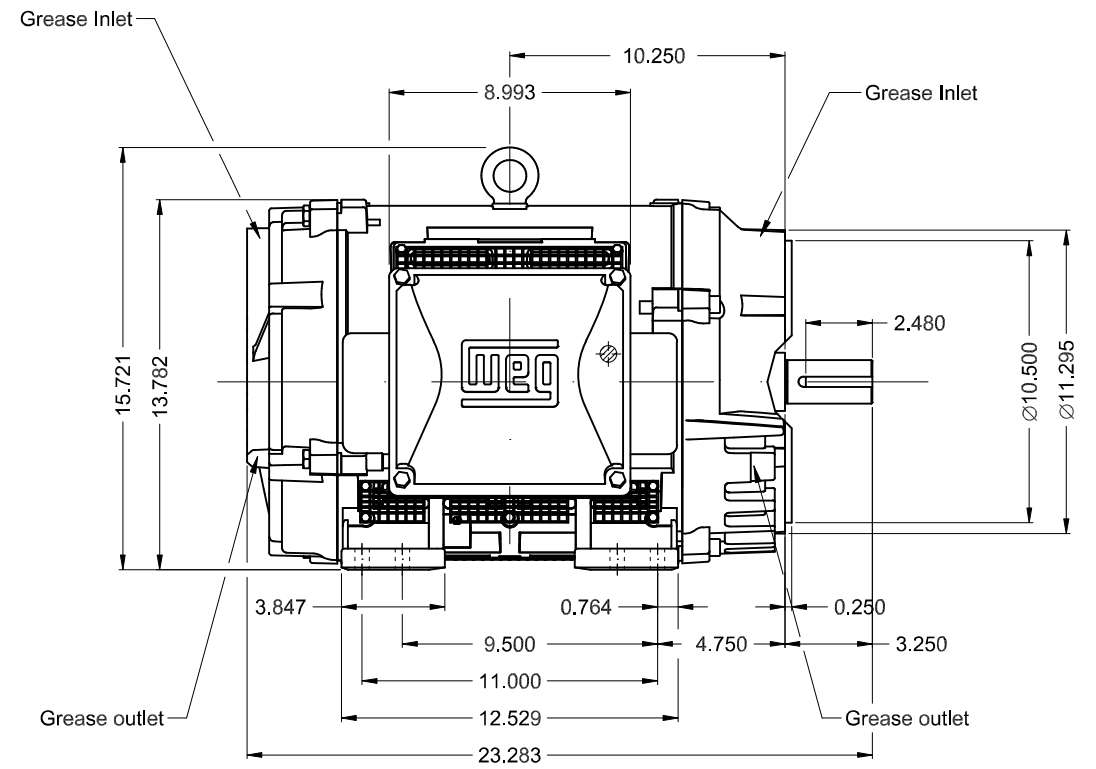
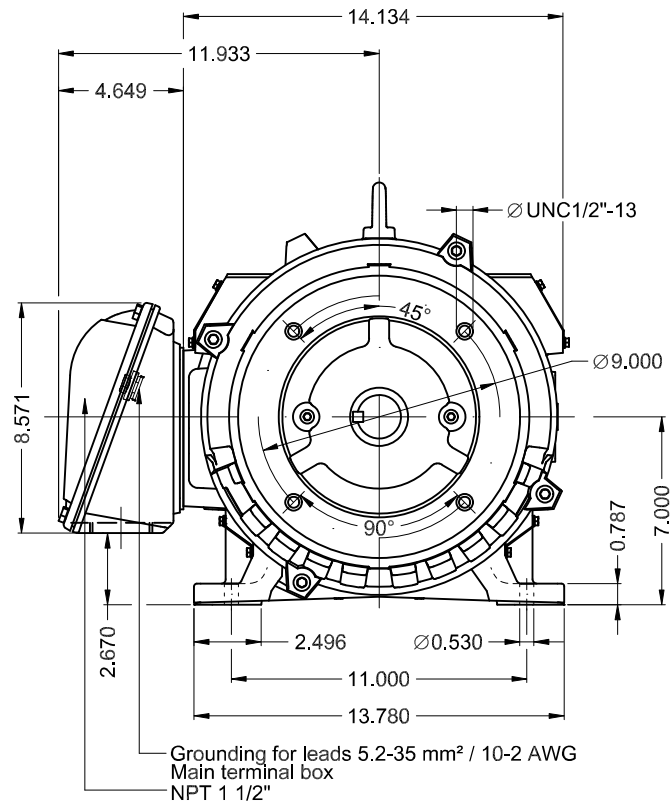
	<u>Drive end</u>	<u>Non drive end</u>
Bearing type :	6311 Z C3	6211 Z C3
Sealing :	Without Bearing Seal	Without Bearing Seal
Lubrication interval :	20000 h	20000 h
Lubricant amount :	18 g	11 g
Lubricant type :	Mobil Polyrex EM	

Notes
USABLE @208V 104A SF 1.15 SFA 119A

This revision replaces and cancel the previous one, which must be eliminated.
(1) Looking the motor from the shaft end.
(2) Measured at 1m and with tolerance of +3dB(A).
(3) Approximate weight subject to changes after manufacturing process.
(4) At 100% of full load.

These are average values based on tests with sinusoidal power supply, subject to the tolerances stipulated in NEMA MG-1.

Rev.	Changes Summary	Performed	Checked	Date
Performed by		Page		Revision
Checked by		1 / 1		
Date	11/03/2025			



Bearing cap
 Color RAL 5009
 Painting plan 203A
 Mounting NEMA F-1
 Mounting B34D

40 HP 02 Poles 60 Hz

Dimensions in inches

XME A3

HYBRISUSER						00			
ECM	LOC	SUMMARY OF MODIFICATIONS			EXECUTED	CHECKED	RELEASED	DATE	VER
EXECUTED	HYBRISUSER	THREE PH. MOTOR W40 NEMA PREM. EFF.			PREVIEW				
CHECKED		FRAME 284/6TSC IP23 ODP			WDD		00		
RELEASED					SHEET		1 / 1		
REL. DATE		WMO	Jaragua do Sul	Product Engineering					





60Hz: For use on PWM: VT 1000:1, CT 3:1,
1.00SF



Mod.T01#FOXON
CC029A

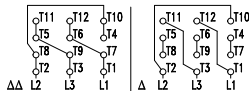
MODEL 040360T3E286TSC-W40




Inverter Duty Motor
IEC 60034-1

MADE IN BRAZIL
14496989

PH3 Fr. 284/6TSC DUTY CONT. ODP(IC01) IP23 DES B(N) Code G
337lb 1000m.a.s.l. INS cl. F DT 80K AMB 40°C SF 1.25//1.00

	V	Hz	kW	HP	RPM	A	SFA	PF	IE code	NEMA NOM EFF		
										η	100%	75%/50%
230 $\Delta\Delta$	460 Δ	60	30	40	3540	94.8	47.4	119	59.3	0.86	IE3	92.4/92.4/91.7
380 Δ	-	50	22	30	2950	41.9	-	41.9	-	0.86	IE3	92.8/91.4/90.0
-	-	-	-	-	-	-	-	-	-	-	-	-
-	-	-	-	-	-	-	-	-	-	-	-	-



-  → 6311-Z-C3 (18g)
-  → 6211-Z-C3 (11g)
-  ~~MOBIL POLYREX EM (20000h)~~

