

DATA SHEET



Three Phase Induction Motor - Squirrel Cage

Customer : _____

Product line : W40 NEMA Premium Efficiency Three-Phase Product code : 14285017
 Catalog # : 20018OT3G445TSD-W40

Frame : 444/5TSD Output : 200 HP (150 kW) Poles : 4 Frequency : 60 Hz Rated voltage : 460 V Rated current : 234 A L. R. Amperes : 1544 A LRC : 6.6x(Code G) No load current : 86.5 A Rated speed : 1783 rpm Slip : 0.94 % Rated torque : 589 ft.lb Locked rotor torque : 210 % Breakdown torque : 250 % Insulation class : F Service factor : 1.15 Moment of inertia (J) : 46.4 sq.ft.lb Design : B	Locked rotor time : 25s (cold) 14s (hot) Temperature rise : 80 K Duty cycle : Cont.(S1) Ambient temperature : -20°C to +40°C Altitude : 1000 m.a.s.l. Protection degree : IP23 Cooling method : IC01 - ODP Mounting : F-1 Rotation ¹ : Both (CW and CCW) Noise level ² : 78.0 dB(A) Starting method : Direct On Line Approx. weight ³ : 1422 lb
--	---

Output	25%	50%	75%	100%	Foundation loads	
Efficiency (%)	95.3	95.4	95.8	95.8	Max. traction	: 3743 lb
Power Factor	0.46	0.72	0.80	0.84	Max. compression	: 5165 lb

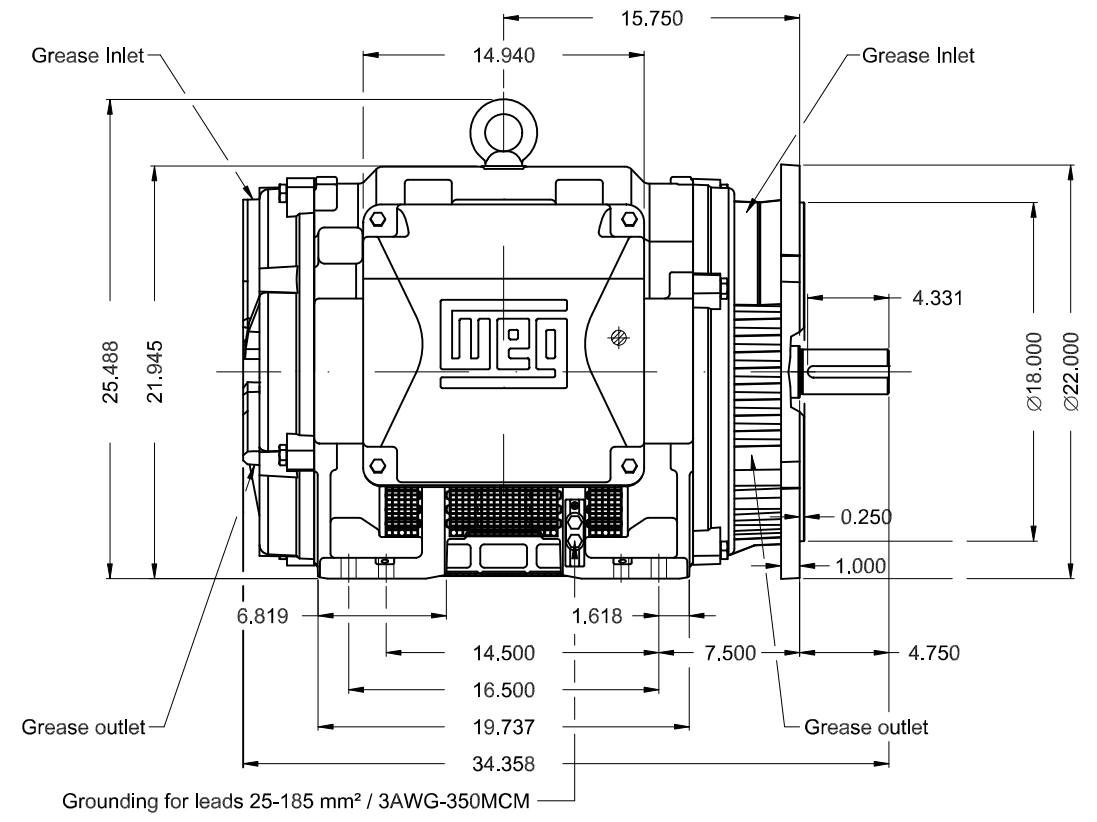
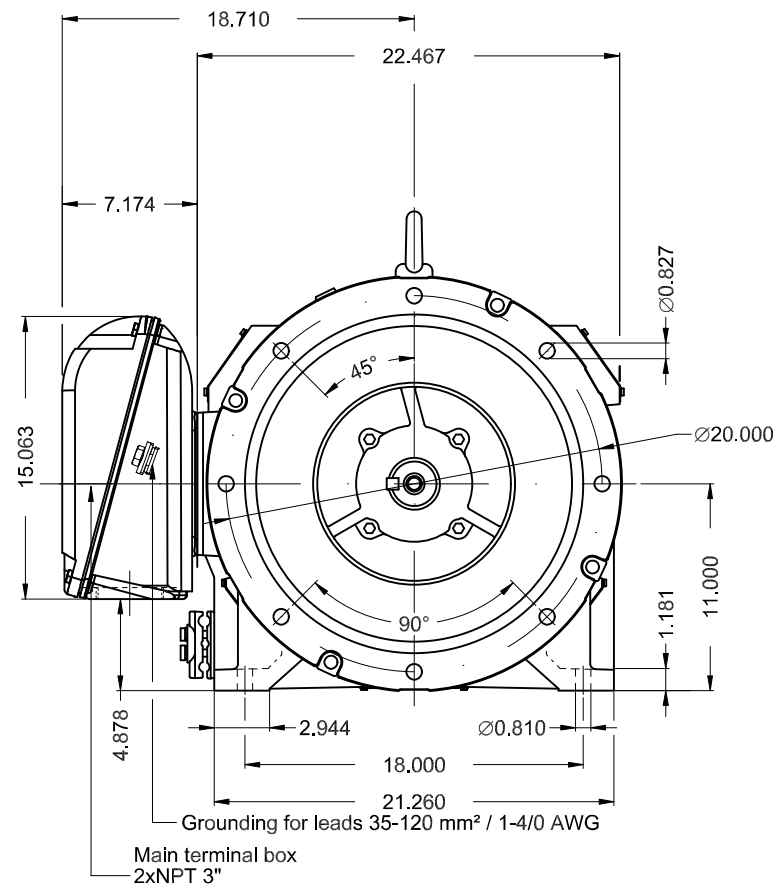
	<u>Drive end</u>	<u>Non drive end</u>
Bearing type :	6314 C3	6212 Z C3
Sealing :	Without Bearing Seal	Without Bearing Seal
Lubrication interval :	20000 h	20000 h
Lubricant amount :	27 g	13 g
Lubricant type :	Mobil Polyrex EM	

Notes

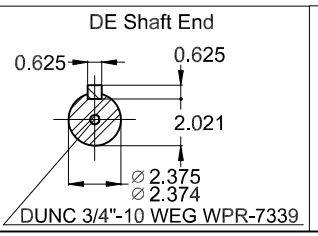
This revision replaces and cancel the previous one, which must be eliminated.
 (1) Looking the motor from the shaft end.
 (2) Measured at 1m and with tolerance of +3dB(A).
 (3) Approximate weight subject to changes after manufacturing process.
 (4) At 100% of full load.

These are average values based on tests with sinusoidal power supply, subject to the tolerances stipulated in NEMA MG-1.

Rev.	Changes Summary	Performed	Checked	Date
Performed by			Page	Revision
Checked by				
Date	12/03/2025			



- TS shaft end
- Color RAL 5009
- Painting plan 203A
- Mounting NEMA F-1
- Mounting B35R(D)



200 HP 04 Poles 60 Hz										A		
										1:10		
										00		
ECM	LOC	SUMMARY OF MODIFICATIONS					HYBRISUSER	EXECUTED	CHECKED	RELEASED	DATE	VER
EXECUTED	HYBRISUSER	THREE PH. MOTOR W40 NEMA PREM. EFF.						PREVIEW				
CHECKED		FRAME 444/5TSD IP23 ODP						WDD	00			
RELEASED								SHEET		1 / 1		
REL. DATE		WMO	Jaragua do Sul		Product Engineering							



60Hz: For use on PWM: VT 1000:1, CT 2:1,
1.00SF



Mod.T01#FOXON
CC029A

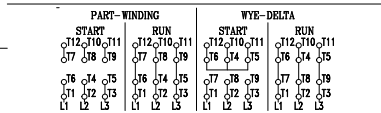
MODEL 200180T3G445TSD-W40


Inverter Duty Motor


MADE IN BRAZIL
14285017

PH3	60Hz	Fr. 444/5TSD	1000m.a.s.l.	IP23	ODP	1421lb
V 460				A 234		
HP 200				kW 150		
SF 1.15				SFA 269		
RPM 1783				PF 0.84		
AMB 40°C				INS cl. F DT80K	NEMA NOM EFF 95.8%	
DUTY CONT.				DES B	Code G	

175HP 132kW 50Hz 380V 247A 1480RPM SF 1.00 EFF 95.6% (IE3)



 → 6314-C3 (27g)

 → 6212-Z-C3 (13g)

 MOBIL POLYREX EM (20000h)

