

DATA SHEET

Single Phase Induction Motor - Squirrel Cage



Customer : WEG ELECTRIC CORPORATION - WEC

Product line : W22

| | | | |
|-----------------------|-------------------|-----------------------------|-------------------------|
| Frame | : 90L | Locked rotor time | : 8 s (hot) 14 s (cold) |
| Output | : 1.5 kW | Temperature rise | : 80 K |
| Poles | : 2 | Duty cycle | : S1 |
| Frequency | : 60 Hz | Ambient temperature | : -20 °C to +40 °C |
| Rated voltage | : 230 V | Altitude | : 3280 ft |
| Rated current | : 9.33 A | Protection degree | : IP55 |
| L. R. Amperes | : 78.4 A | Cooling method | : IC411 - TEFC |
| LRC | : 8.4 | Mounting | : B35L(D) |
| No load current | : 3.50 A | Rotation ¹ | : Both |
| Rated speed | : 3520 rpm | Noise level ² | : 69.0 dB(A) |
| Slip | : 2.22 % | Vibration class | : NOT APPLICABLE |
| Rated torque | : 3.00 ft.lb | Starting method | : Direct On Line |
| Locked rotor torque | : 210 % | Coupling | : Direct |
| Pull up torque | : 175 % | Approx. weight ³ | : 63.8 lb |
| Breakdown torque | : 270 % | Painting plan | : 207A |
| Insulation class | : F | Color | : RAL 5009 |
| Service factor | : 1.15 | | |
| Moment of inertia (J) | : 0.0522 sq.ft.lb | | |

| | | | | | |
|----------------|------|------|------|-------------------------------------|-----|
| Output | 50% | 75% | 100% | Load type | : - |
| Efficiency (%) | 68.4 | 74.9 | 77.7 | Load torque | : - |
| Power Factor | 0.81 | 0.87 | 0.90 | Load inertia (J=GD ² /4) | : - |

| | | | | |
|----------------------|------------------|---------------|------------------|-----|
| | Drive end | Non drive end | Foundation loads | |
| Bearing type | 6205-ZZ | 6203-ZZ | Max. traction | : - |
| Lubrication interval | - | - | Max. compression | : - |
| Lubricant amount | - | - | | |
| Lubricant type | MOBIL POLYREX EM | | | |

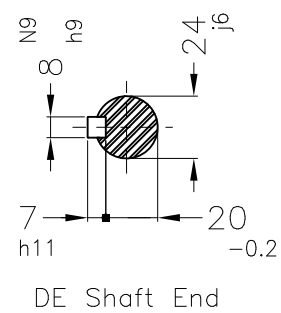
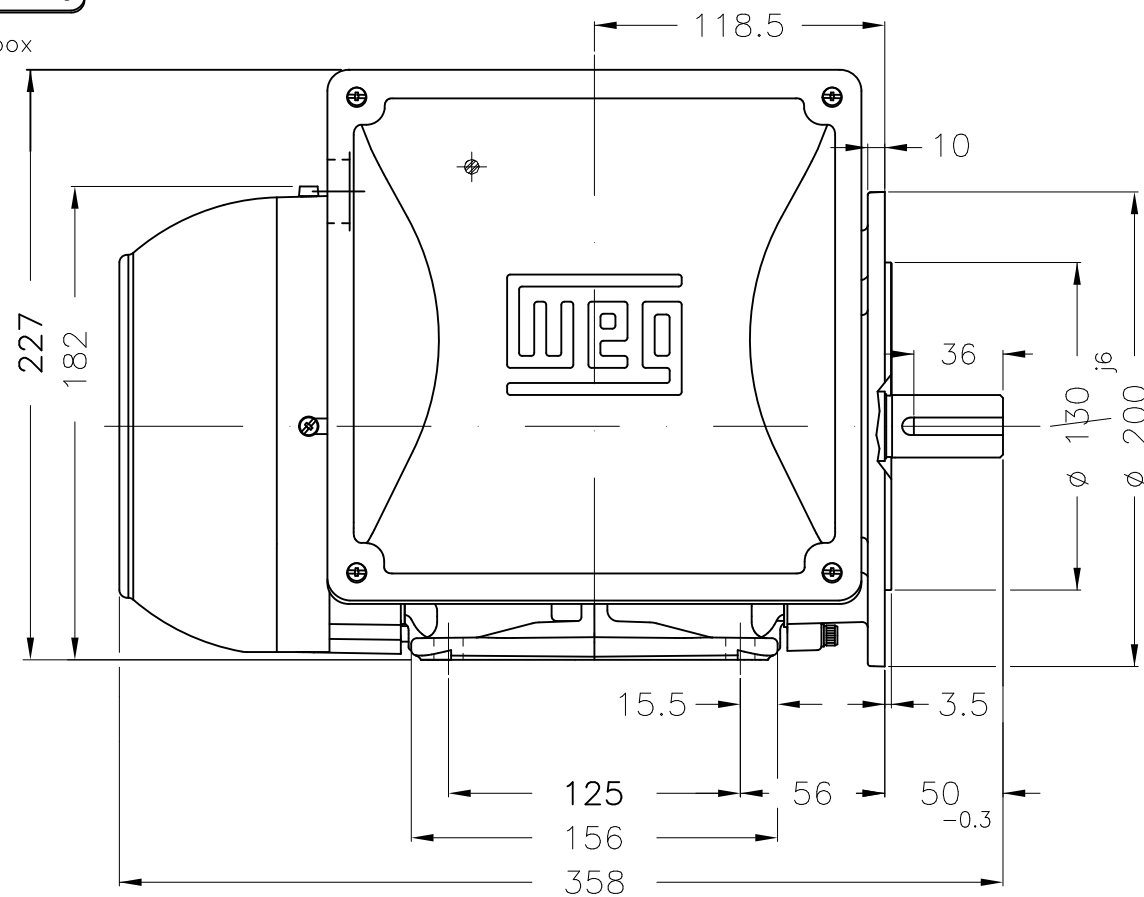
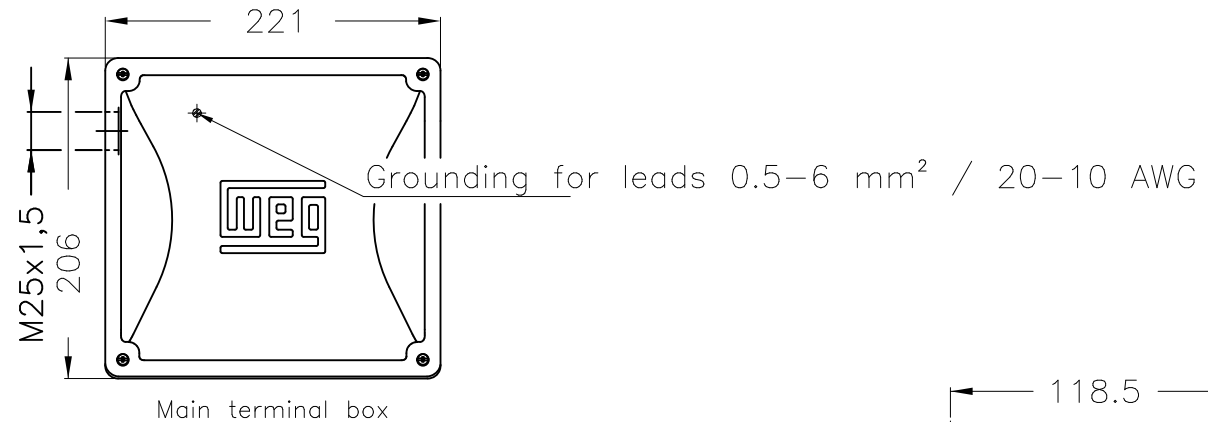
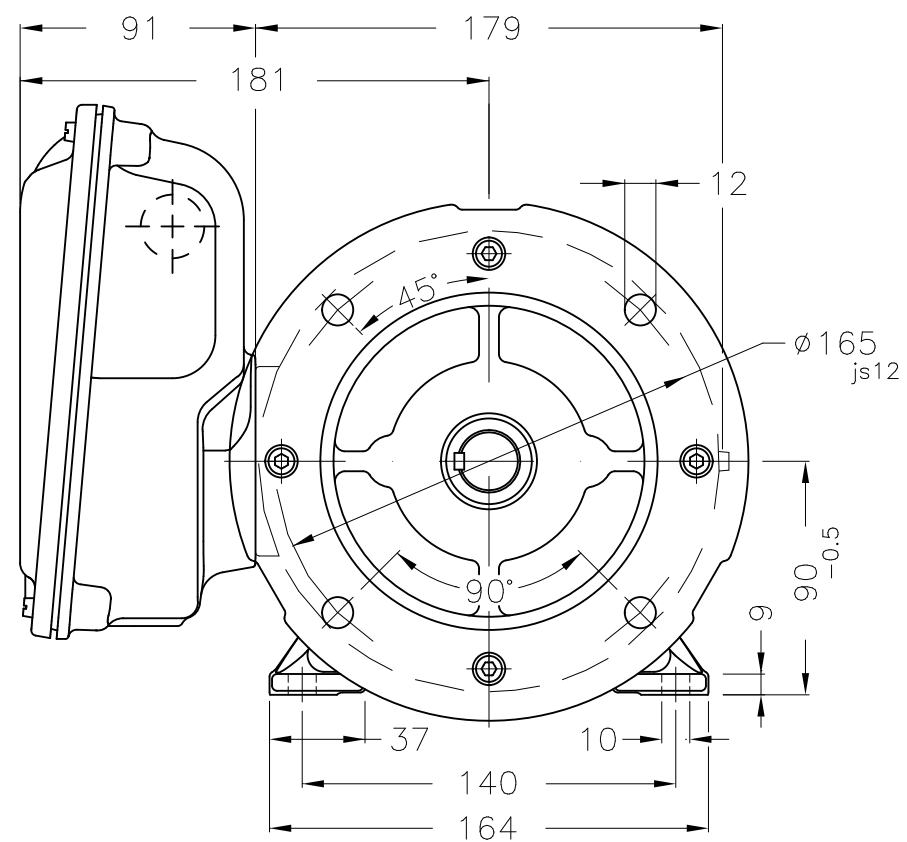
Notes

| | | | | |
|-----------|---------------|---------------|-----------|----------------|
| Standards | Specification | : IEC 60034-1 | Vibration | : IEC 60034-14 |
| | Test | : IEC 60034-2 | Tolerance | : IEC 60034-1 |
| | Noise | : IEC 60034-9 | | |

This revision replaces and cancel the previous one, which must be eliminated.
 (1) Looking the motor from the shaft end.
 (2) Measured at 1m and with tolerance of +3dB(A).
 (3) Approximate weight, subject to be changed after manufacturing process.
 (4) At 100% of full load.

These are average values based on tests with sinusoidal power supply, subject to the tolerances stipulated in IEC 60034-1.

| | | | | | |
|--------------|-----------------|--|------|------------|------|
| Rev. | Changes Summary | | Rev. | Checked | Date |
| Performed by | kmello | | | 1383079981 | |
| Checked by | AUTOMATICO | | | Page | Rev. |
| Date | 18/05/2023 | | | 1 / 1 | 0 |



Center hole
DM8 WEG WPR-7339
(DIN 332)

Dimensions in mm

| | | | | | | | | | | |
|---------------------------------------|-----------|---|----------------|---------------------|-----------|----------------------------|---------|----------|------|-----|
| Mounting B35L(D) | | | | | | | | | | |
| WEG ELECTRIC CORPORATION - WEC | | | | | | | | | | |
| | | | | | PIRWBUSER | | 00 | | | |
| ECM | LOC | SUMMARY OF MODIFICATIONS | | | | EXECUTED | CHECKED | RELEASED | DATE | VER |
| EXECUTED | PIRWBUSER | SINGLE PH. MOTOR W22 FRAME 90L IP55 TEFC | | | | PREVIEW WDD 00 | | | | |
| CHECKED | | | | | | | | | | |
| RELEASED | | | | | | | | | | |
| REL. DATE | | WMO | Jaragua do Sul | Product Engineering | SHEET | 1 / 1 | | | | |

1.5 kW 02 Poles 60 Hz

A