

DATA SHEET

Single Phase Induction Motor - Squirrel Cage



Customer : WEG ELECTRIC CORPORATION - WEC

Product line : W22

Frame	: 100L	Locked rotor time	: 9 s (hot) 16 s (cold)
Output	: 2.2 kW	Temperature rise	: 80 K
Poles	: 2	Duty cycle	: S1
Frequency	: 60 Hz	Ambient temperature	: -20 °C to +40 °C
Rated voltage	: 230 V	Altitude	: 3280 ft
Rated current	: 11.9 A	Protection degree	: IP55
L. R. Amperes	: 104 A	Cooling method	: IC411 - TEFC
LRC	: 8.7	Mounting	: B35L(D)
No load current	: 2.50 A	Rotation ¹	: Both
Rated speed	: 3520 rpm	Noise level ²	: 72.0 dB(A)
Slip	: 2.22 %	Vibration class	: NOT APPLICABLE
Rated torque	: 4.40 ft.lb	Starting method	: Direct On Line
Locked rotor torque	: 230 %	Coupling	: Direct
Pull up torque	: 195 %	Approx. weight ³	: 88.4 lb
Breakdown torque	: 280 %	Painting plan	: 207A
Insulation class	: F	Color	: RAL 5009
Service factor	: 1.15		
Moment of inertia (J)	: 0.1519 sq.ft.lb		

Output	50%	75%	100%	Load type	: -
Efficiency (%)	72.7	79.2	81.8	Load torque	: -
Power Factor	0.92	0.95	0.98	Load inertia (J=GD ² /4)	: -

Bearing type	Drive end 6206-ZZ	Non drive end 6206-ZZ	Foundation loads	
Lubrication interval	-	-	Max. traction	: -
Lubricant amount	-	-	Max. compression	: -
Lubricant type	MOBIL POLYREX EM			

Notes

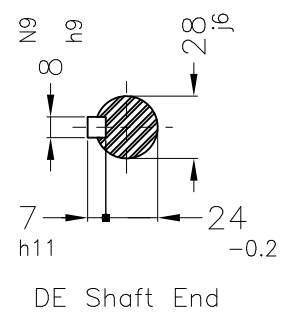
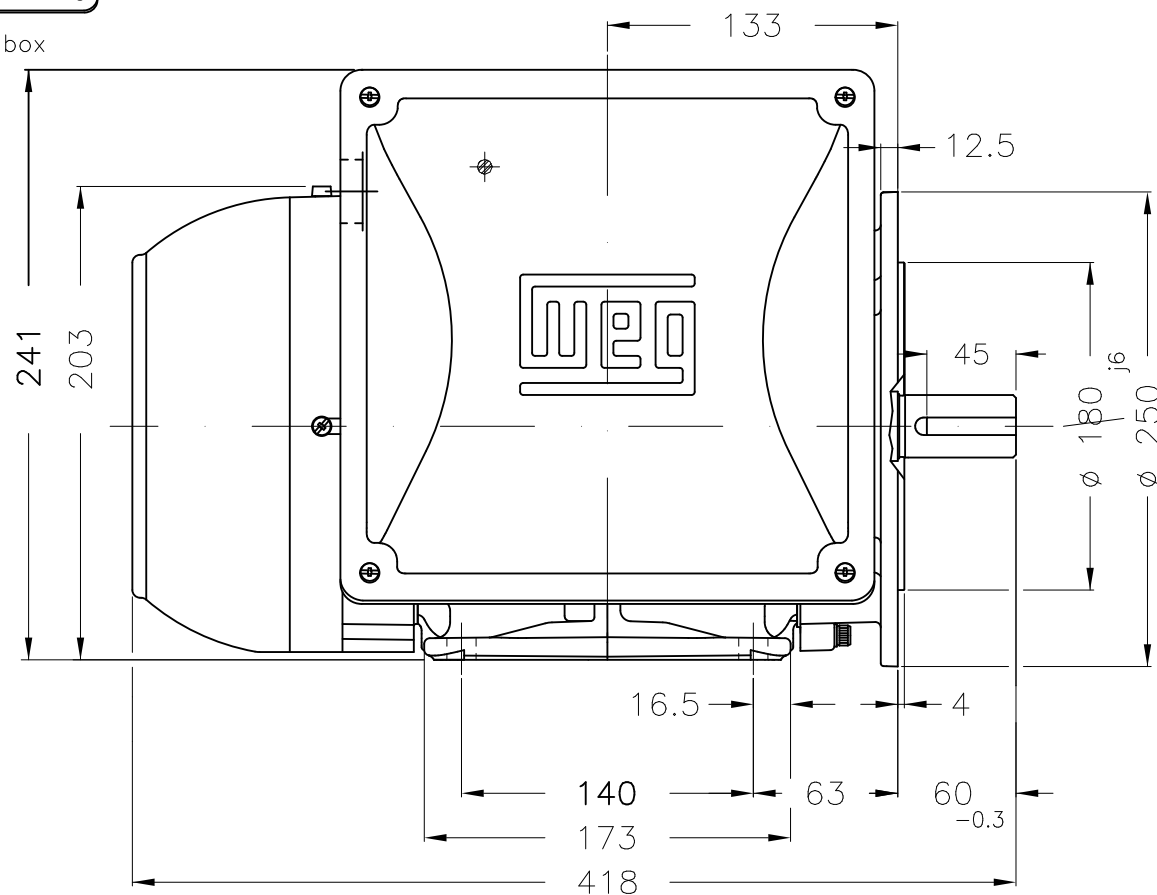
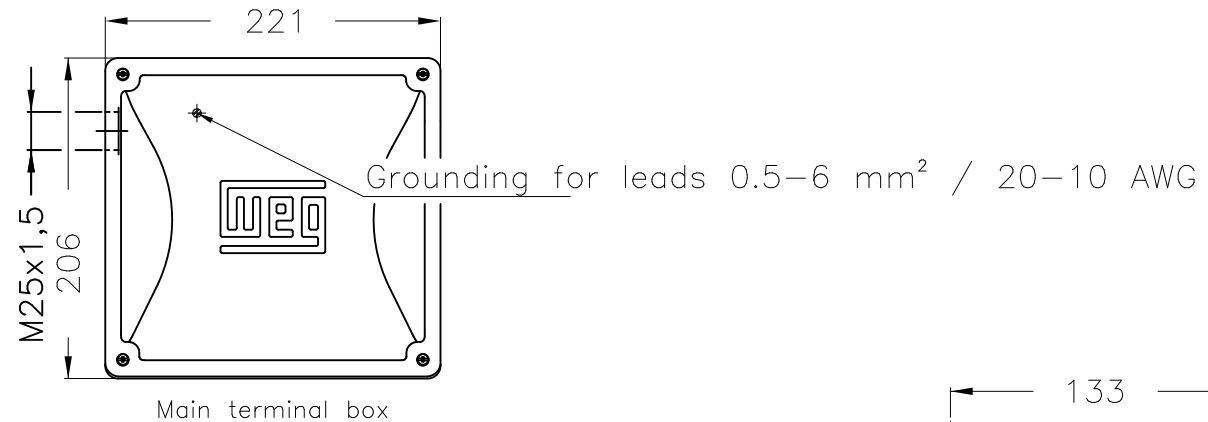
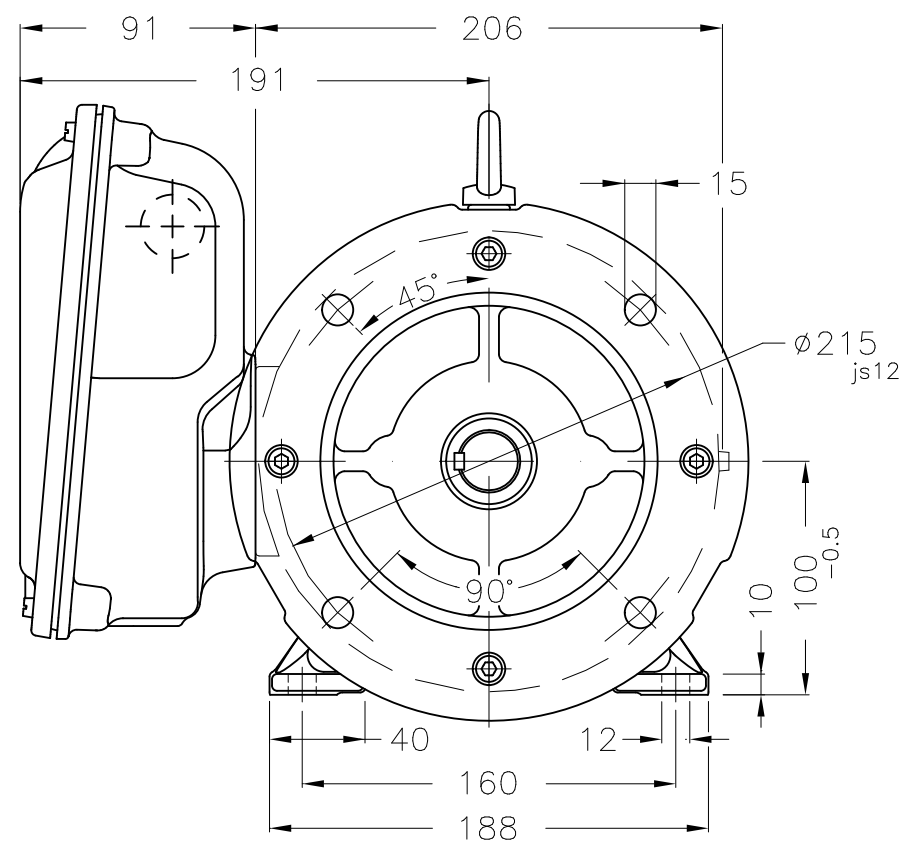
Standards

Specification	: IEC 60034-1	Vibration	: IEC 60034-14
Test	: IEC 60034-2	Tolerance	: IEC 60034-1
Noise	: IEC 60034-9		

This revision replaces and cancel the previous one, which must be eliminated.
(1) Looking the motor from the shaft end.
(2) Measured at 1m and with tolerance of +3dB(A).
(3) Approximate weight, subject to be changed after manufacturing process.
(4) At 100% of full load.

These are average values based on tests with sinusoidal power supply, subject to the tolerances stipulated in IEC 60034-1.

Rev.	Changes Summary	Rev.	Checked	Date
Performed by	kmello	1383084737		
Checked by	AUTOMATICO	Page	Rev.	
Date	18/05/2023	1 / 1	0	



Center hole
DM10 WEG WPR-7339
(DIN 332)

Dimensions in mm

Mounting B35L(D)									
WEG ELECTRIC CORPORATION - WEC									
					PIRWUSER		00		
ECM	LOC	SUMMARY OF MODIFICATIONS			EXECUTED	CHECKED	RELEASED	DATE	VER
EXECUTED	PIRWUSER	SINGLE PH. MOTOR W22 FRAME 100L IP55 TEFC			PREVIEW WDD 00				
CHECKED									
RELEASED									
REL. DATE		WMO	Jaragua do Sul	Product Engineering	SHEET	1 / 1			

2.2 kW 02 Poles 60 Hz

A