

DATA SHEET

Single Phase Induction Motor - Squirrel Cage



Customer : WEG ELECTRIC CORPORATION - WEC

Product line : Special Motor

| | | | |
|-----------------------|-------------------|-----------------------------|-------------------------|
| Frame | : 100L | Locked rotor time | : 6 s (hot) 11 s (cold) |
| Output | : 3 kW | Temperature rise | : 105 K |
| Poles | : 4 | Duty cycle | : S1 |
| Frequency | : 60 Hz | Ambient temperature | : -20 °C to +40 °C |
| Rated voltage | : 230 V | Altitude | : 3280 ft |
| Rated current | : 17.9 A | Protection degree | : IP55 |
| L. R. Amperes | : 104 A | Cooling method | : IC411 - TEFC |
| LRC | : 5.8 | Mounting | : B35L(D) |
| No load current | : 7.40 A | Rotation ¹ | : Both |
| Rated speed | : 1730 rpm | Noise level ² | : 58.0 dB(A) |
| Slip | : 3.89 % | Vibration class | : NOT APPLICABLE |
| Rated torque | : 12.2 ft.lb | Starting method | : Direct On Line |
| Locked rotor torque | : 200.0 % | Coupling | : Direct |
| Pull up torque | : 170.0 % | Approx. weight ³ | : 94.2 lb |
| Breakdown torque | : 200.0 % | Painting plan | : 207A |
| Insulation class | : F | Color | : RAL 5009 |
| Service factor | : 1.00 | | |
| Moment of inertia (J) | : 0.2207 sq.ft.lb | | |

| | | | | | |
|----------------|------|------|------|-------------------------------------|-----|
| Output | 50% | 75% | 100% | Load type | : - |
| Efficiency (%) | 77.0 | 81.5 | 82.0 | Load torque | : - |
| Power Factor | 0.61 | 0.85 | 0.89 | Load inertia (J=GD ² /4) | : - |

| | | | |
|--|------------------|---------------|---|
| Bearing type Lubrication interval Lubricant amount Lubricant type | Drive end | Non drive end | Foundation loads Max. traction : - Max. compression : - |
| | 6206-ZZ | 6206-ZZ | |
| | - | - | |
| | - | - | |
| | MOBIL POLYREX EM | | |

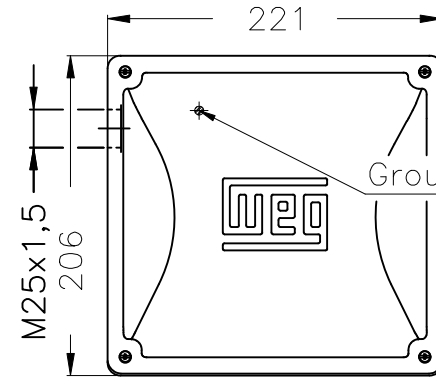
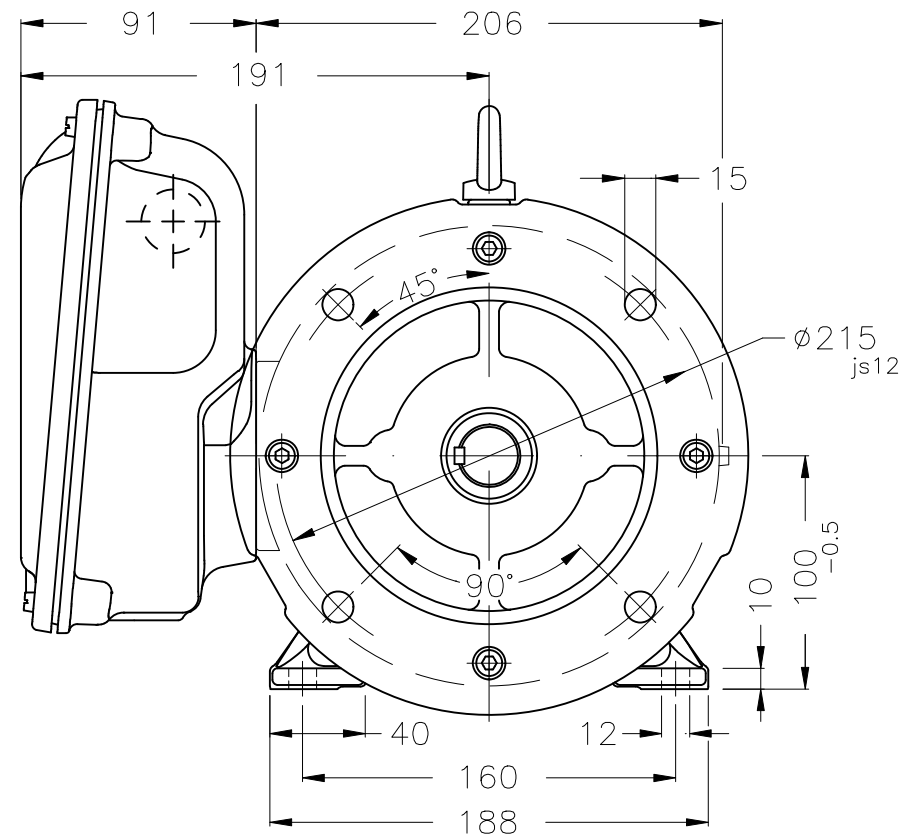
Notes
W22

| | | | | |
|-----------|---------------|---------------|-----------|----------------|
| Standards | Specification | : IEC 60034-1 | Vibration | : IEC 60034-14 |
| | Test | : IEC 60034-2 | Tolerance | : IEC 60034-1 |
| | Noise | : IEC 60034-9 | | |

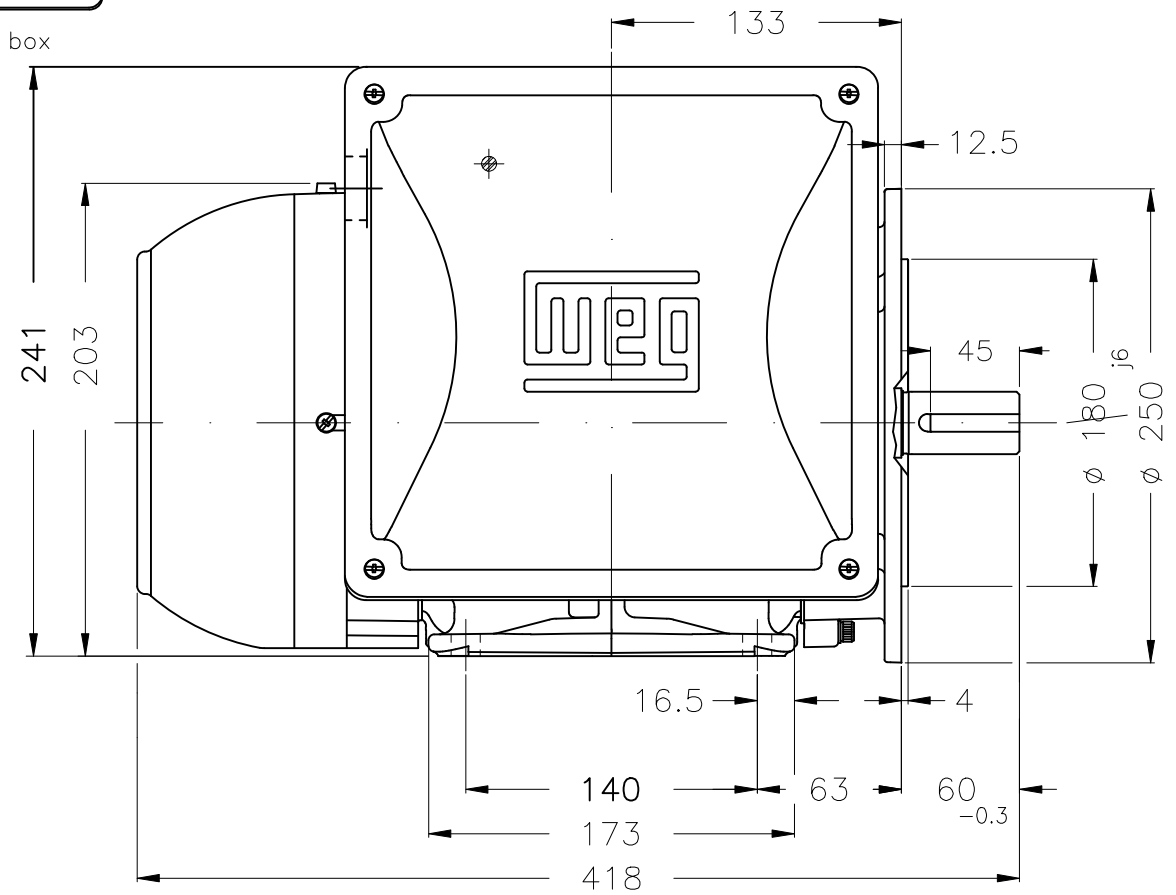
This revision replaces and cancel the previous one, which must be eliminated.
 (1) Looking the motor from the shaft end.
 (2) Measured at 1m and with tolerance of +3dB(A).
 (3) Approximate weight, subject to be changed after manufacturing process.

These are average values based on tests with sinusoidal power supply, subject to the tolerances stipulated in IEC 60034-1.

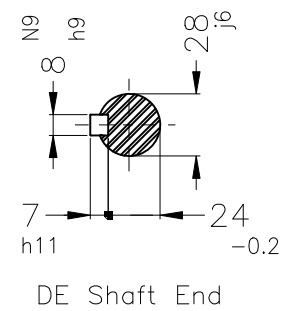
| | | | | |
|--------------|-----------------|------------|---------|------|
| Rev. | Changes Summary | Rev. | Checked | Date |
| Performed by | lucaspiton | 1383088116 | | |
| Checked by | AUTOMATICO | Page | Rev. | |
| Date | 16/07/2024 | 1 / 1 | 1 | |



Main terminal box



Center hole
DM10 WEG WPR-7339
(DIN 332)



DE Shaft End

| | | | | | | | | | | |
|---------------------------------------|-----------|--|----------------|---------------------|--|--|----------------|-----------|----------|-------|
| Service factor 1.0 | | | | | | | | | | |
| Mounting B35L(D) | | | | | | | | | | |
| WEG ELECTRIC CORPORATION - WEG | | | | | | | | | | |
| | | | | | | | | PIRWBUSER | 01 | |
| ECM | LOC | SUMMARY OF MODIFICATIONS | | | | | EXECUTED | CHECKED | RELEASED | DATE |
| EXECUTED | PIRWBUSER | SINGLE PH. MOTOR W22 FRAME 100L IP55 TEFC | | | | | PREVIEW | | | |
| CHECKED | | | | | | | WDD | | | 01 |
| RELEASED | | | | | | | SHEET | | | 1 / 1 |
| REL. DATE | | WMO | Jaragua do Sul | Product Engineering | | | | | | |

3 kW 04 Poles 60 Hz